

## Economic Growth Region 10

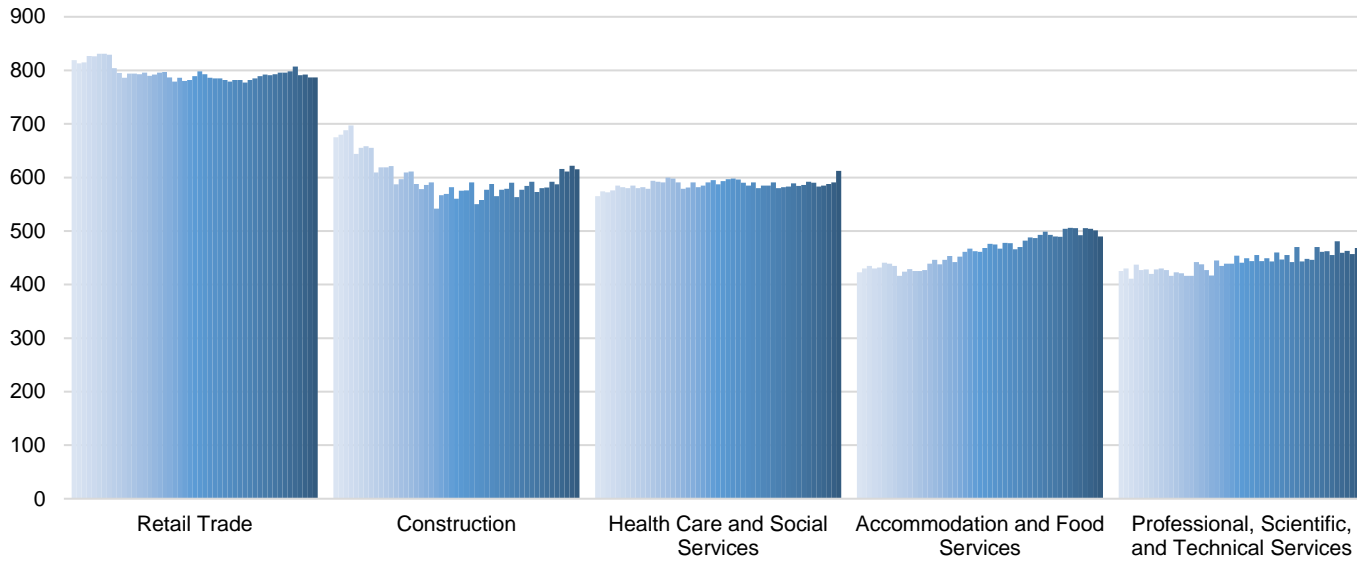
Clark, Crawford, Floyd, Harrison, Scott, and Washington Counties

Industry	Jobs	Previous Year	Establishments	Previous Year	Average Weekly Wage	Previous Year
<b>Total</b>	<b>110,867</b>	<b>↑ 1.73%</b>	<b>5,683</b>	<b>↑ 1.65%</b>	<b>\$786</b>	<b>↑ 2.61%</b>
Accommodation and Food Services	11,043	↑ 2.06%	490	↓ -0.41%	\$296	↑ 3.50%
Admin. & Support & Waste Mgt. & Rem. Services*	4,656	↓ -1.79%	262	↑ 3.97%	\$721	↑ 4.04%
Agriculture, Forestry, Fishing and Hunting*	210	↑ 28.83%	57	↑ 7.55%	\$478	↓ -17.16%
Arts, Entertainment, and Recreation*	703	↑ 7.00%	72	↑ 4.35%	\$274	↓ -3.52%
Construction	5,017	↑ 5.78%	615	↑ 4.77%	\$861	↑ 6.56%
Educational Services*	7,837	○ 0.00%	107	↑ 7.00%	\$784	↑ 2.22%
Finance and Insurance	3,292	↑ 0.06%	383	↑ 0.79%	\$1,173	↓ -4.01%
Health Care and Social Services	16,589	↑ 2.26%	612	↑ 4.97%	\$821	↑ 1.48%
Information*	783	↑ 6.10%	60	↑ 3.45%	\$750	↑ 9.81%
Management of Companies and Enterprises*	371	↓ -8.62%	29	↓ -6.45%	\$1,302	↓ -24.91%
Manufacturing*	20,631	↑ 0.94%	353	↑ 0.57%	\$1,042	↑ 4.30%
Mining*	180	↓ -1.64%	18	↓ -5.26%	\$1,062	↓ -1.94%
Other Services (Except Public Administration)	2,768	↑ 8.29%	379	↓ -0.52%	\$596	↓ -8.02%
Professional, Scientific, and Technical Services*	3,043	↑ 12.04%	470	↑ 2.40%	\$910	↓ -1.41%
Public Administration	5,477	↑ 2.35%	153	↑ 1.32%	\$815	↓ -0.24%
Real Estate and Rental and Leasing*	1,014	↑ 4.00%	248	↑ 2.06%	\$742	↑ 7.38%
Retail Trade	13,391	↓ -1.23%	787	↓ -2.48%	\$505	↑ 3.91%
Transportation & Warehousing*	8,567	↑ 4.12%	265	↑ 4.33%	\$899	↑ 7.28%
Utilities*	431	↓ -1.82%	36	↑ 2.86%	\$1,885	↑ 12.00%
Wholesale Trade*	2,489	↑ 1.76%	287	↑ 0.35%	\$1,069	↑ 1.33%

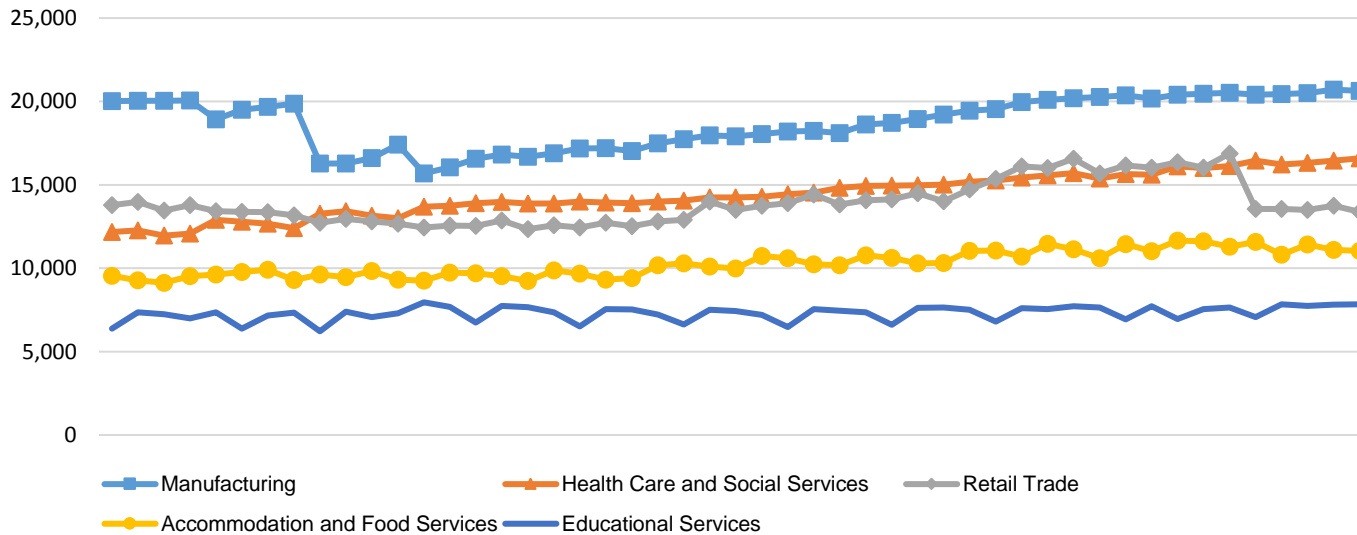
\* These industries exclude county data (jobs and wages) that are not available due to non-disclosure requirements.

D = This item is not available due to non-disclosure requirements.

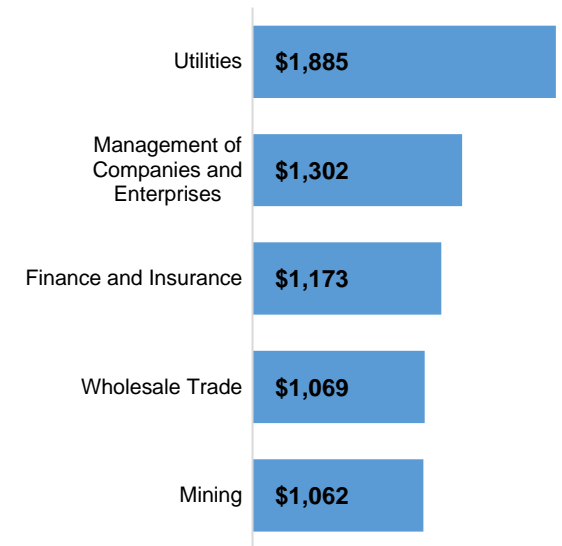
Historic Trend of Top 5 Largest Industries by Establishments  
1Q 2007 - 1Q 2019



Historic Trend of Top 5 Largest Industries by Jobs  
1Q 2007 - 1Q 2019



Top 5 Paying Industries by  
Average Weekly Wage  
1Q 2019



Source:

Quarterly Census of Employment and Wages,  
Indiana Dept. of Workforce Development

For more information, contact:

**Jillian Gregory**

Regional Workforce Analyst

(812) 537-2485

[jgregory@dwd.in.gov](mailto:jgregory@dwd.in.gov)



INDIANA  
DEPARTMENT OF  
**WORKFORCE**  
DEVELOPMENT