



HOOSIERS BY THE NUMBERS

Your premier source for labor market information for Indiana.

DWD

INDIANA DEPARTMENT OF
WORKFORCE
DEVELOPMENT

LABOR MARKET REVIEW



September 2025 Labor Market Review

Reported by: Kathy Jaworski

Regional Workforce Analyst

[Email Kathy](#)

kjaworski@dwd.in.gov

Tel: 219-841-6347

DWD

INDIANA DEPARTMENT OF
WORKFORCE
DEVELOPMENT



HOOSIERS BY THE NUMBERS

Your premier source for labor market information for Indiana.



LABOR MARKET REVIEW

Economic Growth Region 1

Statistical Data Report for September 2025, Released December 2025

State Employment and Unemployment

Unemployment rates were higher in September in 8 states, lower in 2 states, and stable in 40 states and the District of Columbia, the U.S. Bureau of Labor Statistics reported. Eighteen states and the District had jobless rate increases from a year earlier, 9 states had decreases, and 23 states had little change. The national unemployment rate, 4.4 percent, changed little over the month but was 0.3 percentage point higher than in September 2024. Nonfarm payroll employment increased in 1 state, decreased in 1 state, and was essentially unchanged in 48 states and the District of Columbia. Over the year, nonfarm payroll increased in 15 states and was essentially unchanged in 35 states and the District.



Economic Growth Region (EGR) 1

Jasper, Lake, LaPorte, Newton, Porter, Pulaski and Starke Counties

September 2025 Labor Force Estimates (not seasonally adjusted)						
Area	Labor Force	Employed	Unemployed	Sep-25	Aug-25	Sep-24
U.S.	171,217,000	163,894,000	7,324,000	4.3%	4.5%	3.9%
IN	3,500,370	3,377,247	123,123	3.5%	3.8%	4.0%
Lake-Porter-Jasper Div	354,350	339,024	15,326	4.3%	4.7%	5.1%
MichCity-LaPorte MSA	52,141	50,179	1,962	3.8%	3.9%	4.6%
EGR 1	422,880	404,986	17,894	4.2%	4.5%	5.0%
Lake Co.	241,622	230,408	11,214	4.6%	5.0%	5.5%
Porter Co.	89,066	85,798	3,268	3.7%	3.9%	4.2%
LaPorte Co.	52,141	50,179	1,962	3.8%	3.9%	4.6%
Newton Co.	6,744	6,484	260	3.9%	3.8%	4.1%
Jasper Co.	16,918	16,334	584	3.5%	3.7%	3.9%
Starke Co.	9,470	9,067	403	4.3%	4.6%	4.9%
Pulaski Co.	6,919	6,716	203	2.9%	3.2%	3.5%
East Chicago	11,082	10,474	608	5.5%	6.1%	6.2%
Hammond	36,382	34,756	1,626	4.5%	4.8%	5.7%
Munster	12,008	11,560	448	3.7%	4.2%	4.4%
Dyer	8,439	8,170	269	3.2%	3.4%	4.2%
Schererville	15,886	15,296	590	3.7%	3.8%	4.6%
Crown Point	16,818	16,110	708	4.2%	4.3%	4.5%
Griffith	9,359	8,988	371	4.0%	4.3%	4.4%
Highland	12,318	11,836	482	3.9%	4.1%	5.0%
Gary	24,500	22,493	2,007	8.2%	9.2%	9.9%
Merrillville	18,216	17,200	1,016	5.6%	5.8%	6.1%
Hobart	15,335	14,687	648	4.2%	4.7%	4.9%
Lake Station	5,509	5,206	303	5.5%	5.6%	7.5%
Portage	19,069	18,275	794	4.2%	4.4%	5.0%
Chesterton	7,490	7,226	264	3.5%	3.8%	4.3%
Valparaiso	17,813	17,155	658	3.7%	3.9%	3.9%
Michigan City	13,758	13,130	628	4.6%	4.6%	5.5%
LaPorte	11,175	10,790	385	3.4%	3.5%	4.0%

Source: Indiana Department of Workforce Development, Research & Analysis, Local Area Unemployment Statistics | Unemployment Statistics Released:12/25 | Notes: The data displayed are presented as estimates only. The most recent month's data are always preliminary and are revised when the next month's data are released. Gary Division has been renamed to Lake-Porter-Jasper Counties Division but still includes Newton County. Michigan City-LaPorte MSA: Laporte County

Unemployment Rates by State (seasonally adjusted): September 2025

U.S. - 4.4%

Illinois - 4.4%

Indiana - 3.7%

Kentucky - 4.7%

Michigan - 5.1%

Ohio - 4.8%

Source: U.S. Department of Labor, Bureau of Labor Statistics

Unemployment Rank by County (of 92 counties): September 2025

#2 - Lake (4.6%)

#4 - Starke (4.3%)

#11 - Newton (3.9%)

#15 - LaPorte (3.8%)

#22 - Porter (3.7%)

#32 - Jasper (3.5%)

#90 - Pulaski (2.9%)

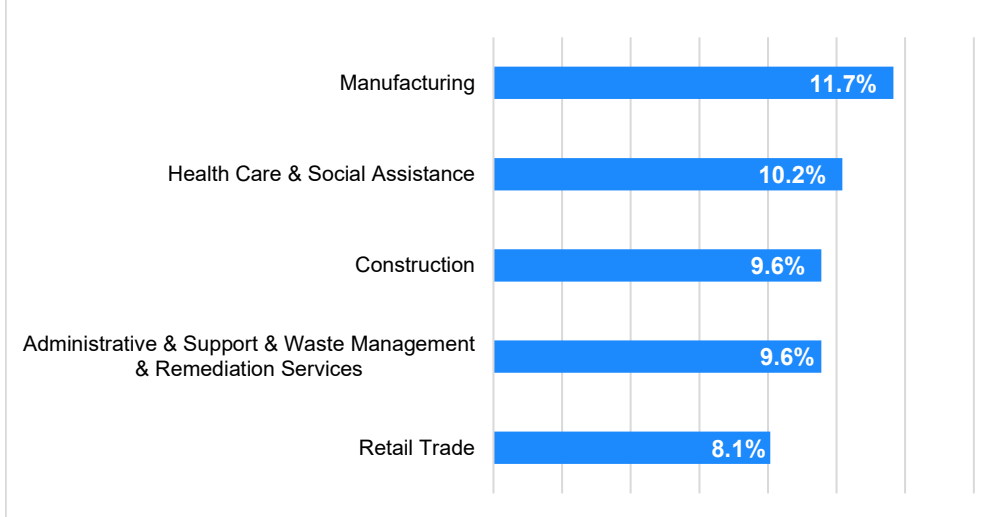
Source: Indiana Department of Workforce Development, Research and Development, Local Area Unemployment Statistics

Statewide Average Weekly Hours & Earnings by Industry for September 2025			
Industry	Avg. Earnings per hr	Avg. # of hours worked per week	Avg. Earnings per week
Construction	\$39.16	41.6	\$1,629.06
Manufacturing	\$25.34	42.8	\$1,084.55
Durable Goods	\$26.27	43.7	\$1,148.00
Fabricated Metal Product Manufacturing	\$25.83	42.0	\$1,084.86
Transportation Equipment Manufacturing	\$27.81	42.4	\$1,179.14
Non-Durable Goods	\$23.00	40.8	\$938.40
Retail Trade	\$20.27	28.6	\$579.72
Financial Activities	\$28.73	37.6	\$1,080.25
Health Care and Social Assistance	\$31.59	32.6	\$1,029.83
Accommodation and Food Services	\$16.70	23.7	\$395.79
Food Services and Drinking Places	\$16.44	23.7	\$389.63

Source: Indiana Department of Workforce Development, Current Employment Statistics

Percentage of Unemployment Claims for Top 5 Region 1 Industries September 2025

Distribution as a Percent of Total



Source: Indiana Department of Workforce Development, Research and Analysis

WARN Notices

WARN Notices for Region 1 for September 2025				
Company	City	County	# affected	Notice Date
There are no WARN Notices for September 2025 for Region 1.				
Significant WARN Notices for nearby locations				
Company	City	County	# Affected	Notice Date
Weiss Memorial Hospital	Chicago, IL	Cook, IL	289	9/5/25
TouchPoint Support Services at Saint Joseph	Joliet, IL	Will, IL	105	9/5/25
Brookdale Senior Living/Brookdale Lake View	Chicago, IL	Cook, IL	117	9/19/25
Industrial Container Services, LLC	Chicago, IL	Cook, IL	168	9/30/25

Source: Indiana Department of Workforce Development, WARN Notices | For information on WARN Act requirements, you may go to the U.S. Department of Labor Employment Training Administration Fact Sheet: <https://www.doleta.gov/programs/factsht/warn.htm>

Unemployment Claims: September 2025

Region 1

Initial Claims

09/06/25 - 321(D)

09/13/25 - 292(D)

09/20/25 - 274(D)

09/27/25 - 257(D)

Continued Claims

09/06/25 - 2,013

09/13/25 - 1,931

09/20/25 - 1,881

09/27/25 - 1,846

Total Claims

09/06/25 - 2,334

09/13/25 - 2,223

09/20/25 - 2,155

09/27/25 - 2,103

State of Indiana

Initial Claims

09/06/25 - 2,348

09/13/25 - 2,652

09/20/25 - 2,456

09/27/25 - 2,285

Continued Claims

09/06/25 - 20,005

09/13/25 - 19,658

09/20/25 - 19,093

09/27/25 - 19,375

Total Claims

09/06/25 - 22,353

09/13/25 - 22,310

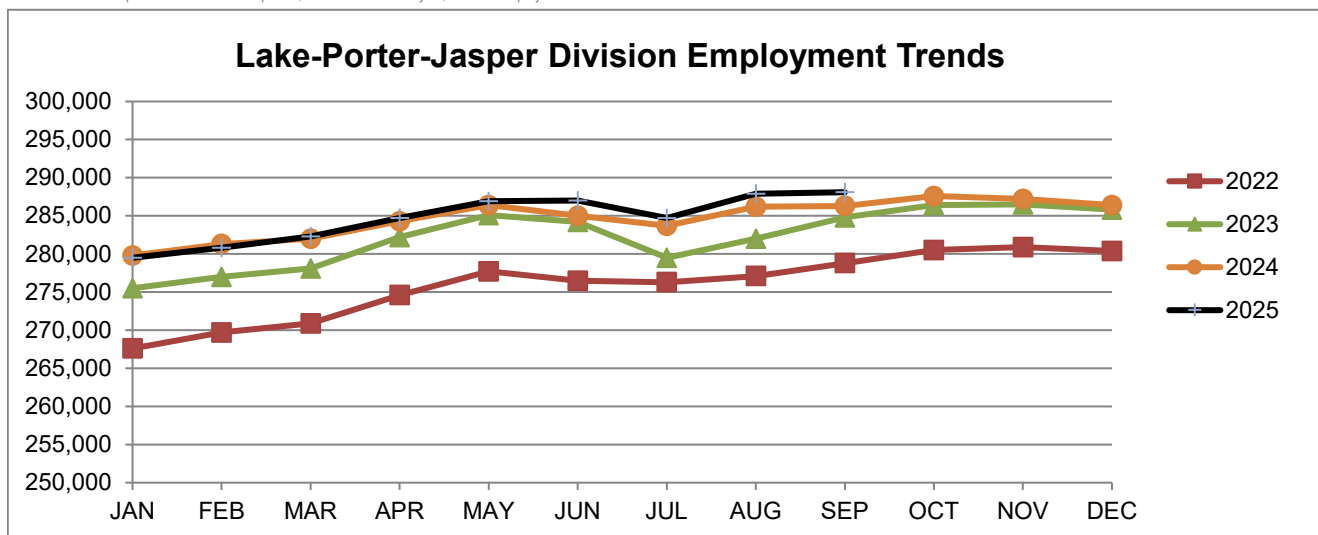
09/20/25 - 21,549

09/27/25 - 21,660

Notes: (D) Indicates one or more counties are excluded due to non-disclosure issues | Numbers subject to weekly revision | Source: Indiana Department of Workforce Development, Research and Analysis

Lake-Porter-Jasper Division							
Wage and Salaried Employment	September 2025			# Change	% Change	# Change	% Change
Industry	Sep-25	Aug-25	Sep-24	Aug-25 to Sep-25	Sep-24 to Sep-25		
Total Nonfarm	288,100	287,900	286,300	200	0.1%	1,800	0.6%
Total Private	255,300	256,600	253,400	-1,300	-0.5%	1,900	0.8%
Goods Producing	52,400	52,300	53,200	100	0.2%	-800	-1.5%
Service Providing	235,700	235,600	233,100	100	0.0%	2,600	1.1%
Private Service Providing	202,900	204,300	200,200	-1,400	-0.7%	2,700	1.4%
Mining and Logging	100	100	100	0	0.0%	0	0.0%
Mining, Logging and Construction	18,600	18,400	19,100	200	1.1%	-500	-2.6%
Construction	18,500	18,300	19,000	200	1.1%	-500	-2.6%
Manufacturing	33,800	33,900	34,100	-100	-0.3%	-300	-0.9%
Durable Goods	24,700	24,700	25,000	0	0.0%	-300	-1.2%
Trade, Transportation and Utilities	61,300	61,400	61,000	-100	-0.2%	300	0.5%
Wholesale Trade	11,400	11,400	11,100	0	0.0%	300	2.7%
Retail Trade	31,900	31,900	31,600	0	0.0%	300	1.0%
General Merchandise Stores	7,200	7,100	7,000	100	1.4%	200	2.9%
Other Gen Merch Stores	5,400	5,300	5,100	100	1.9%	300	5.9%
Transportation, Warehousing and Utilities	18,000	18,100	18,300	-100	-0.6%	-300	-1.6%
Information	1,900	1,900	1,900	0	0.0%	0	0.0%
Financial Activities	9,200	9,300	9,500	-100	-1.1%	-300	-3.2%
Professional and Business Services	30,100	30,100	28,900	0	0.0%	1,200	4.2%
Employment Services	3,300	3,200	3,300	100	3.1%	0	0.0%
Education and Health Services	53,200	53,000	51,500	200	0.4%	1,700	3.3%
Educational Services	6,100	5,500	5,700	600	10.9%	400	7.0%
Health Care and Social Assistance	47,100	47,500	45,800	-400	-0.8%	1,300	2.8%
General Medical and Surgical Hospitals	14,200	14,300	13,800	-100	-0.7%	400	2.9%
Leisure and Hospitality	32,500	33,600	32,900	-1,100	-3.3%	-400	-1.2%
Arts, Entertainment and Recreation	3,700	3,900	4,000	-200	-5.1%	-300	-7.5%
Food Services and Drinking Places	28,800	29,700	28,900	-900	-3.0%	-100	-0.4%
Other Services	14,700	15,000	14,500	-300	-2.0%	200	1.4%
Total Government	32,800	31,300	32,900	1,500	4.8%	-100	-0.3%
Federal Government	2,000	2,000	2,000	0	0.0%	0	0.0%
State Government	4,100	3,500	4,200	600	17.1%	-100	-2.4%
Local Government	26,700	25,800	26,700	900	3.5%	0	0.0%
Local Government Educational Services	15,000	13,600	15,200	1,400	10.3%	-200	-1.3%

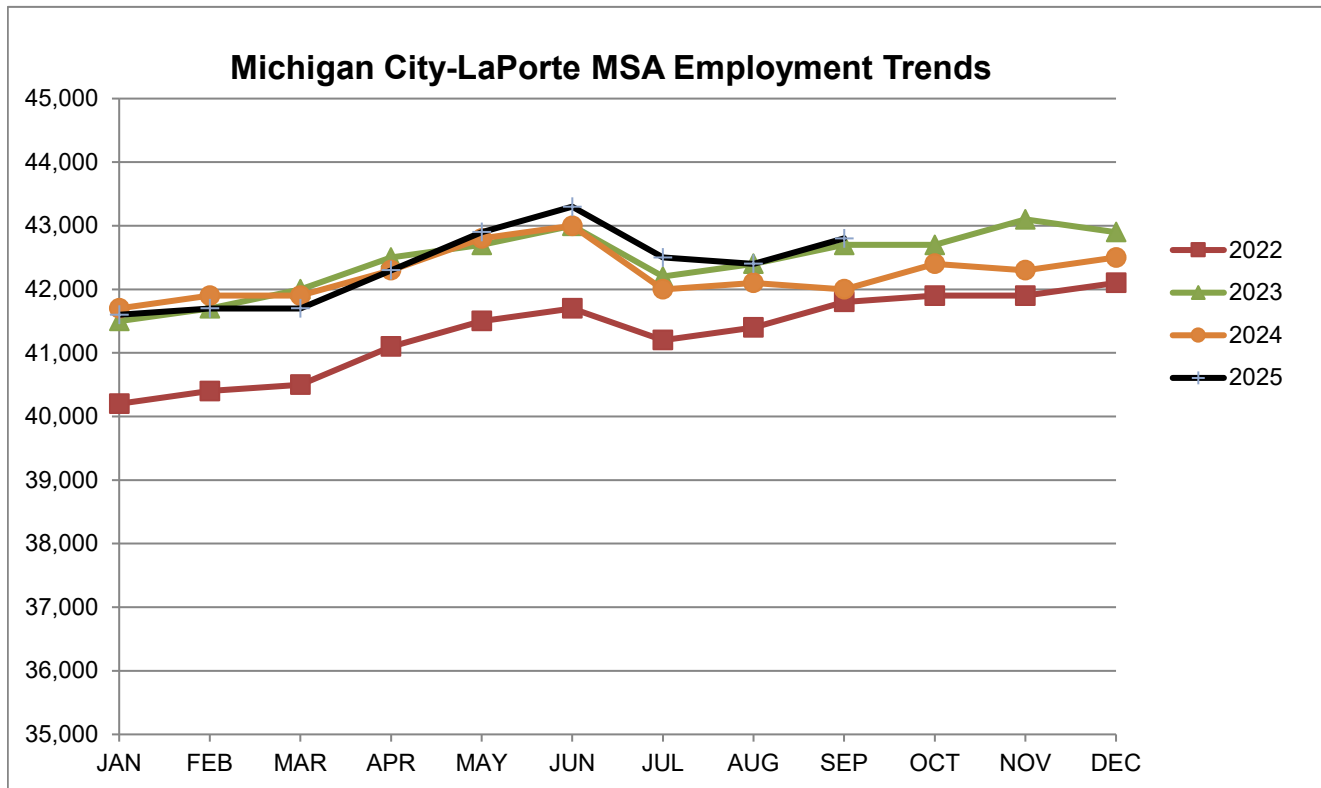
Source: Indiana Dept of Workforce Development, Research and Analysis, Current Employment Statistics



Source: Indiana Department of Workforce Development, Research & Analysis, Current Employment Statistics | Note: Historical data for the most recent 4 years (both seasonally adjusted and not seasonally adjusted) are revised near the beginning of each calendar year, prior to the release of January estimates for statewide data.

Michigan City-LaPorte MSA							
Wage and Salaried Employment	September 2025			# Change	% Change	# Change	% Change
Industry	Sep-25	Aug-25	Sep-24	Aug-25 to Sep-25		Sep-24 to Sep-25	
Total Nonfarm	42,800	42,400	42,000	400	0.9%	800	1.9%
Total Private	36,400	36,500	35,600	-100	-0.3%	800	2.3%
Goods Producing	11,100	11,100	10,700	0	0.0%	400	3.7%
Service Providing	31,700	31,300	31,300	400	1.3%	400	1.3%
Private Service Providing	25,300	25,400	24,900	-100	-0.4%	400	1.6%
Mining, Logging and Construction	2,500	2,500	2,300	0	0.0%	200	8.7%
Manufacturing	8,600	8,600	8,400	0	0.0%	200	2.4%
Trade, Transportation & Utilities	8,500	8,500	8,500	0	0.0%	0	0.0%
Wholesale Trade	1,900	1,900	1,800	0	0.0%	100	5.6%
Retail Trade	4,900	4,900	4,900	0	0.0%	0	0.0%
Information	200	200	200	0	0.0%	0	0.0%
Financial Activities	1,300	1,300	1,300	0	0.0%	0	0.0%
Professional and Business Services	2,800	2,800	2,600	0	0.0%	200	7.7%
Education and Health Services	6,000	6,000	5,900	0	0.0%	100	1.7%
Leisure and Hospitality	5,000	5,100	4,900	-100	-2.0%	100	2.0%
Other Services	1,500	1,500	1,500	0	0.0%	0	0.0%
Total Government	6,400	5,900	6,400	500	8.5%	0	0.0%
Federal Government	200	200	200	0	0.0%	0	0.0%
State Government	1,900	1,900	1,900	0	0.0%	0	0.0%
Local Government	4,300	3,800	4,300	500	13.2%	0	0.0%
Local Government Educational Services	2,300	1,900	2,400	400	21.1%	-100	-4.2%

Source: Indiana Dept of Workforce Development, Research and Analysis, Current Employment Statistics



Source: Indiana Department of Workforce Development, Research & Analysis, Current Employment Statistics | Note: Historical data for the most recent 4 years (both seasonally adjusted and not seasonally adjusted) are revised near the beginning of each calendar year, prior to the release of January estimates for statewide data.

Frequently Listed Jobs	
Top 20 job listings by number of postings in Region 1 in the past month	
Rank	Occupations
1	Registered Nurses
2	Retail Salespersons
3	Heavy and Tractor-Trailer Truck Drivers
4	Home Health and Personal Care Aides
5	Customer Service Representatives
6	Janitors and Cleaners, Except Maids and Housekeeping Cleaners
7	Food Preparation Workers
8	First-Line Supervisors of Retail Sales Workers
9	Fast Food and Counter Workers
10	Food Service Managers
11	Health Technologists and Technicians, All Other
12	Stockers and Order Fillers
13	Laborers and Freight, Stock, and Material Movers, Hand
14	Cashiers
15	Maintenance and Repair Workers, General
16	First-Line Supervisors of Food Preparation and Serving Workers
17	Driver/Sales Workers
18	Medical and Health Services Managers
19	Production Workers, All Other
20	Nursing Assistants

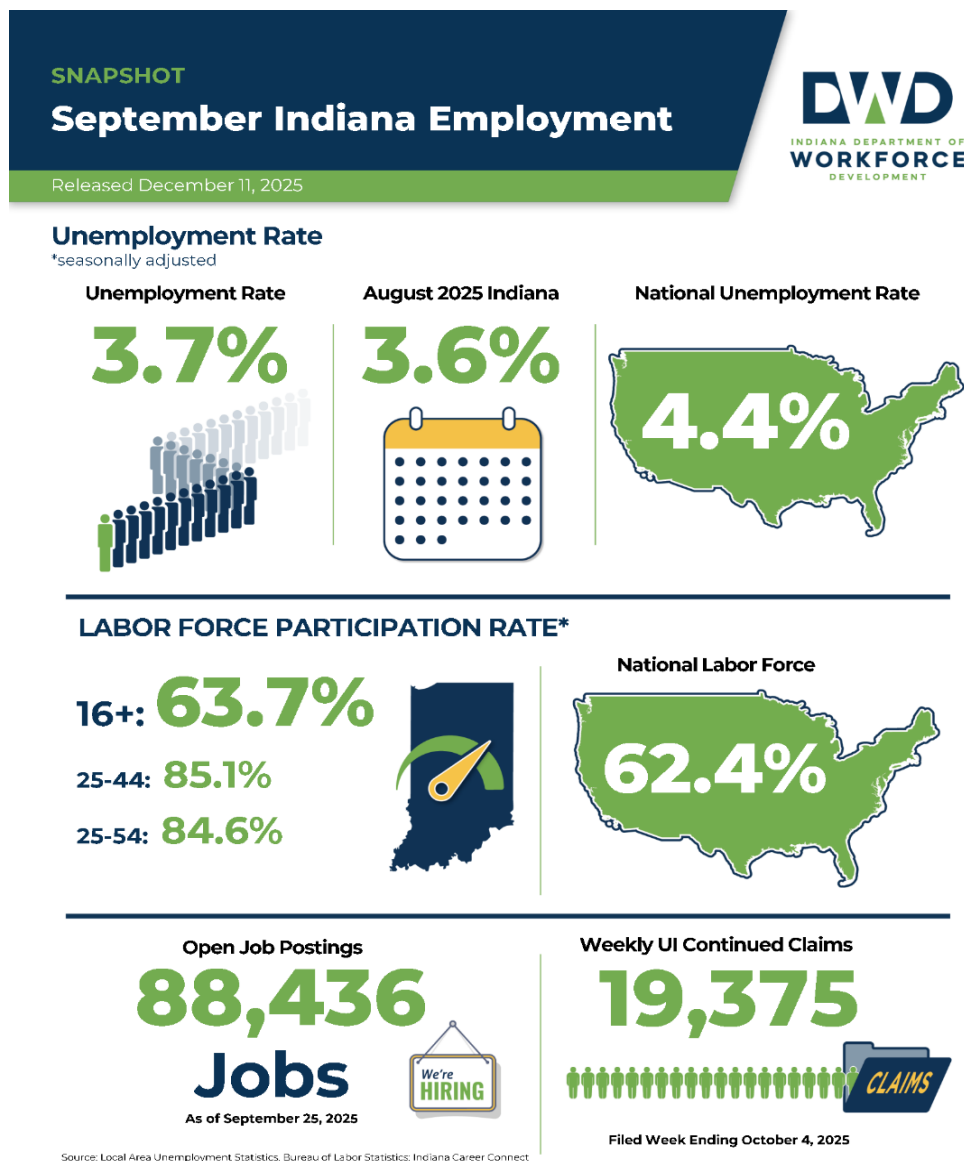
Source: Lightcast

Applicant Pool	
Top 20 occupations desired by applicants on their resumes in the past 12 months	
Occupations	# of applicants
Production Workers, All Other	755
Helpers--Production Workers	708
Laborers and Freight, Stock, and Material Movers, Hand	678
Customer Service Representatives	533
Assemblers and Fabricators, All Other	480
Heavy and Tractor-Trailer Truck Drivers	461
Cashiers	417
Construction Laborers	372
Office Clerks, General	302
Carpenters	265
Industrial Truck and Tractor Operators	239
Welders, Cutters, Solderers, and Brazers	219
Janitors and Cleaners, Except Maids and Housekeeping Cleaners	219
Managers, All Other	216
Retail Salespersons	215
Maintenance and Repair Workers, General	212
Medical Assistants	212
Construction and Related Workers, All Other	204
Extraction Workers, All Other	200
Receptionists and Information Clerks	198

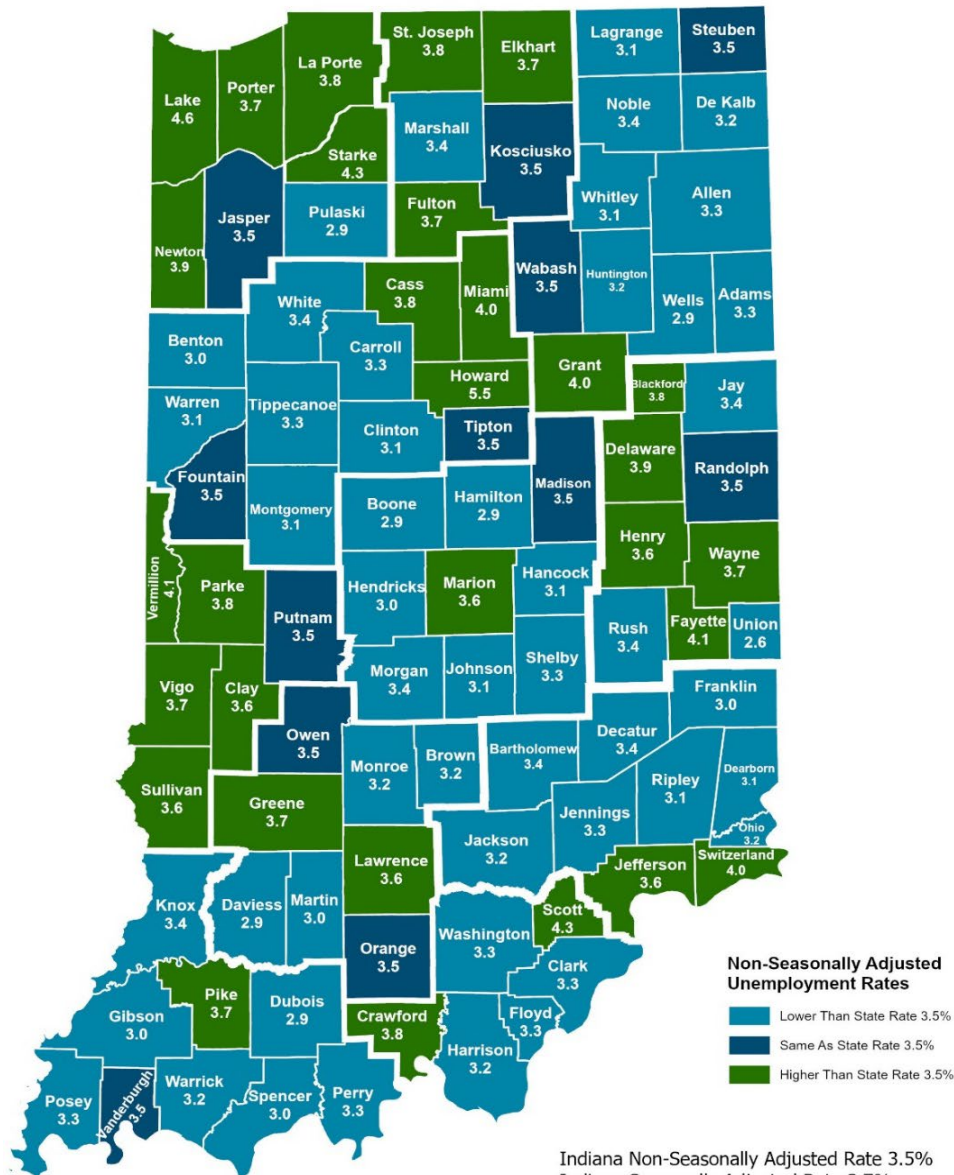
Source: Indiana Workforce Development, Indiana Career Connect

Consumer Price Index (CPI-U Change), Unadjusted Percent Change to September 2025 from						
CPI Item	Sep-24	Aug-25	Sep-24	Aug-25	Sep-24	Aug-25
	Chicago-Naperville-Elgin, IN-IL-WI		U.S. City		Midwest Region*	
All Items	2.9%	0.3%	3.0%	0.3%	3.1%	0.3%
Food & Beverages	2.5%	0.3%	3.0%	0.3%	2.8%	0.2%
Housing	5.4%	0.5%	3.9%	0.1%	4.5%	0.2%
Apparel	4.8%	4.1%	-0.1%	2.6%	1.2%	4.1%
Transportation	0.3%	0.1%	1.7%	0.1%	0.5%	-0.5%
Medical Care	-0.6%	-0.4%	3.3%	0.2%	2.9%	0.5%
Recreation	5.4%	1.5%	3.0%	0.3%	4.7%	0.6%
Education & Communication	-6.2%	-3.6%	0.4%	0.2%	0.6%	0.7%
Other Goods & Services	3.1%	0.6%	4.1%	0.4%	3.3%	0.9%

*Midwest region = Midwest Urban Average. Midwest Region includes Illinois, Indiana, Iowa, Kansas, Michigan, Minnesota, Missouri, Nebraska, North Dakota, Ohio, South Dakota and Wisconsin | Source: U.S. Bureau of Labor Statistics



County Unemployment Rates September 2025



Indiana Non-Seasonally Adjusted Rate 3.5%
 Indiana Seasonally Adjusted Rate 3.7%
 Source: DWD, Local Area Unemployment Statistics



Questions?

Please contact the DWD
 Research and Analysis
 Regional Labor Analyst
 listed below:

Kathy Jaworski
 Regional Labor Analyst
 Research and Analysis

[Indiana Department of
 Workforce Development](https://www.in.gov/dwd/)

219-841-6347

kjaworski@dwd.in.gov