



# HOOSIERS BY THE NUMBERS

Your premier source for labor market information for Indiana.

**DWD**

INDIANA DEPARTMENT OF  
**WORKFORCE**  
DEVELOPMENT

## LABOR MARKET REVIEW



## March 2025 Labor Market Review

**Reported by: Kathy Jaworski**

Regional Workforce Analyst

[Email Kathy](#)

[kjaworski@dwd.in.gov](mailto:kjaworski@dwd.in.gov)

Tel: 219-841-6347

**DWD**

INDIANA DEPARTMENT OF  
**WORKFORCE**  
DEVELOPMENT



## LABOR MARKET REVIEW

# Economic Growth Region 1

Statistical Data Report for March 2025, Released May 2025

## State Employment and Unemployment

Unemployment rates were higher in March in 3 states, lower in 1 state, and stable in 46 states and the District of Columbia, the U.S. Bureau of Labor Statistics reported. Twenty-eight states and the District had jobless rate increases from a year earlier, 1 state had a decrease, and 21 states had little change. The national unemployment rate changed little over the month at 4.2 percent but was 0.3 percentage point higher than in March 2024. Nonfarm payroll employment increased in 6 states and was essentially unchanged in 44 states and the District of Columbia in March 2025. Over the year, nonfarm payroll employment increased in 13 states and was essentially unchanged in 37 states and the District.



## Economic Growth Region (EGR) 1

Jasper, Lake, LaPorte, Newton, Porter, Pulaski and Starke Counties

March 2025 Labor Force Estimates (not seasonally adjusted)						
Area	Labor Force	Employed	Unemployed	Mar-25	Feb-25	Mar-24
U.S.	170,653,000	163,412,000	7,242,000	4.2%	4.5%	3.9%
IN	3,458,470	3,339,639	118,831	3.4%	4.5%	4.3%
Lake-Porter-Jasper Div	351,201	334,666	16,535	4.7%	6.2%	5.6%
MichCity-LaPorte MSA	51,634	49,529	2,105	4.1%	5.4%	4.9%
EGR 1	419,017	399,723	19,294	4.6%	6.1%	5.5%
Lake Co.	239,785	227,649	12,136	5.1%	6.7%	6.0%
Porter Co.	88,019	84,558	3,461	3.9%	5.2%	4.6%
LaPorte Co.	51,634	49,529	2,105	4.1%	5.4%	4.9%
Newton Co.	6,688	6,418	270	4.0%	5.8%	4.8%
Jasper Co.	16,709	16,041	668	4.0%	5.5%	4.7%
Starke Co.	9,387	8,942	445	4.7%	6.6%	5.7%
Pulaski Co.	6,795	6,586	209	3.1%	4.3%	3.7%
East Chicago	11,054	10,348	706	6.4%	8.2%	7.4%
Hammond	36,269	34,340	1,929	5.3%	6.9%	6.3%
Munster	11,910	11,421	489	4.1%	5.0%	4.7%
Dyer	8,363	8,072	291	3.5%	4.8%	4.9%
Schererville	15,675	15,113	562	3.6%	5.4%	4.9%
Crown Point	16,632	15,917	715	4.3%	5.8%	5.4%
Griffith	9,345	8,880	465	5.0%	6.4%	5.3%
Highland	12,201	11,694	507	4.2%	5.7%	5.0%
Gary	24,074	22,224	1,850	7.7%	9.8%	9.2%
Merrillville	18,016	16,994	1,022	5.7%	7.2%	6.8%
Hobart	15,256	14,512	744	4.9%	6.7%	5.7%
Lake Station	5,546	5,144	402	7.2%	10.7%	9.1%
Portage	18,901	18,011	890	4.7%	6.2%	5.3%
Chesterton	7,421	7,121	300	4.0%	5.1%	4.5%
Valparaiso	17,508	16,907	601	3.4%	4.4%	4.2%
Michigan City	13,577	12,960	617	4.5%	5.8%	5.2%
LaPorte	11,053	10,651	402	3.6%	5.0%	4.8%

Source: Indiana Department of Workforce Development, Research & Analysis, Local Area Unemployment Statistics | Unemployment Statistics Released:04/25 | Notes: The data displayed are presented as estimates only. The most recent month's data are always preliminary and are revised when the next month's data are released. Gary Division has been renamed to Lake-Porter-Jasper Counties Division but still includes Newton County. Michigan City-LaPorte MSA: Laporte County

## Unemployment Rates by State (seasonally adjusted): March 2025

**U.S. - 4.2%**

Illinois - 4.8%

**Indiana - 4.1%**

Kentucky - 5.2%

Michigan - 5.5%

Ohio - 4.8%

Source: U.S. Department of Labor, Bureau of Labor Statistics

## Unemployment Rank by County (of 92 counties): March 2025

#2 - Lake (5.1%)

#3 - Starke (4.7%)

#7 - LaPorte (4.1%)

#11 - Jasper (4%)

#12 - Newton (4%)

#15 - Porter (3.9%)

#68 - Pulaski (3.1%)

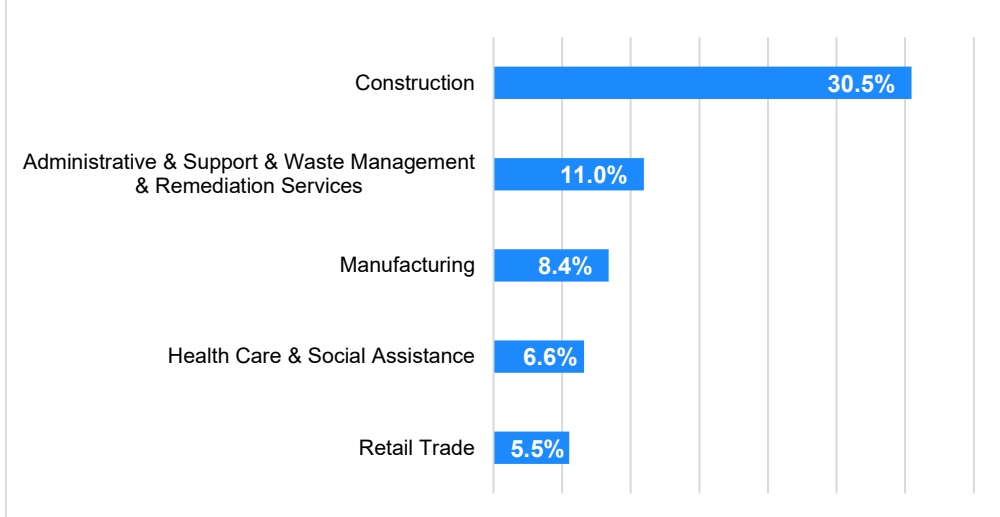
Source: Indiana Department of Workforce Development, Research and Development, Local Area Unemployment Statistics

Statewide Average Weekly Hours & Earnings by Industry for March 2025			
Industry	Avg. Earnings per hr	Avg. # of hours worked per week	Avg. Earnings per week
Construction	\$34.84	38.2	\$1,330.89
Manufacturing	\$26.24	42.8	\$1,123.07
Durable Goods	\$27.11	45.0	\$1,219.95
Fabricated Metal Product Manufacturing	\$26.20	43.3	\$1,134.46
Transportation Equipment Manufacturing	\$28.46	44.0	\$1,252.24
Non-Durable Goods	\$23.73	37.5	\$889.88
Retail Trade	\$20.45	27.9	\$570.56
Financial Activities	\$29.04	38.0	\$1,103.52
Health Care and Social Assistance	\$30.89	33.0	\$1,019.37
Accommodation and Food Services	\$17.05	23.8	\$405.79
Food Services and Drinking Places	\$16.71	23.2	\$387.67

Source: Indiana Department of Workforce Development, Current Employment Statistics

### Percentage of Unemployment Claims for Top 5 Region 1 Industries March 2025

#### Distribution as a Percent of Total



Source: Indiana Department of Workforce Development, Research and Analysis

### WARN Notices

WARN Notices for Region 1 for March 2025				
Company	City	County	# affected	Notice Date
There are no WARN Notices for March 2025 for Region 1.				
Significant WARN Notices for nearby locations				
Company	City	County	# Affected	Notice Date
Six (6) companies in Chicago, IL	Chicago, IL	Cook, IL	597	Mar-25
Gilster-Mary Lee Corporation	Momence, IL	Kankakee, IL	69	Mar-25

Source: Indiana Department of Workforce Development, WARN Notices | For information on WARN Act requirements, you may go to the U.S. Department of Labor Employment Training Administration Fact Sheet: <https://www.doleta.gov/programs/factsht/warn.htm>

### Unemployment Claims: March 2025

#### Region 1

##### Initial Claims

03/01/25 - 498(D)  
03/08/25 - 390(D)  
03/15/25 - 326(D)  
03/22/25 - 335(D)  
03/29/25 - 342(D)

##### Continued Claims

03/01/25 - 3,748  
03/08/25 - 3,515  
03/15/25 - 3,257  
03/22/25 - 3,154  
03/29/25 - 2,999

##### Total Claims

03/01/25 - 4,246  
03/08/25 - 3,905  
03/15/25 - 3,583  
03/22/25 - 3,489  
03/29/25 - 3,341

#### State of Indiana

##### Initial Claims

03/01/25 - 2,963  
03/08/25 - 2,778  
03/15/25 - 2,366  
03/22/25 - 2,550  
03/29/25 - 2,485

##### Continued Claims

03/01/25 - 27,737  
03/08/25 - 26,606  
03/15/25 - 25,133  
03/22/25 - 24,235  
03/29/25 - 23,445

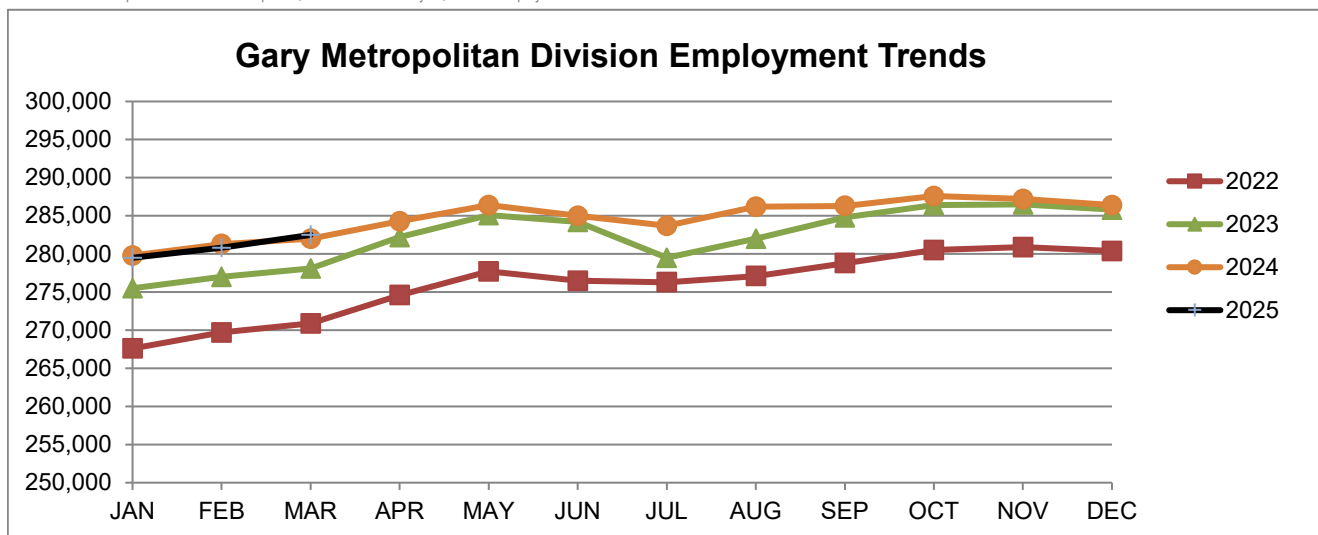
##### Total Claims

03/01/25 - 30,700  
03/08/25 - 29,384  
03/15/25 - 27,499  
03/22/25 - 26,785  
03/29/25 - 25,930

Notes: (D) Indicates one or more counties are excluded due to non-disclosure issues | Numbers subject to weekly revision | Source: Indiana Department of Workforce Development, Research and Analysis

Gary Metropolitan Division							
Wage and Salaried Employment	March 2025			# Change	% Change	# Change	% Change
Industry	Mar-25	Feb-25	Mar-24	Feb-25 to Mar-25		Mar-24 to Mar-25	
<b>Total Nonfarm</b>	<b>282,500</b>	<b>280,800</b>	<b>282,000</b>	<b>1,700</b>	<b>0.6%</b>	<b>500</b>	<b>0.2%</b>
<b>Total Private</b>	<b>249,900</b>	<b>248,200</b>	<b>249,000</b>	<b>1,700</b>	<b>0.7%</b>	<b>900</b>	<b>0.4%</b>
Goods Producing	50,800	50,300	51,000	500	1.0%	-200	-0.4%
Service Providing	231,700	230,500	231,000	1,200	0.5%	700	0.3%
Private Service Providing	199,100	197,900	198,000	1,200	0.6%	1,100	0.6%
Mining and Logging	100	100	100	0	0.0%	0	0.0%
Mining, Logging and Construction	16,800	16,300	17,000	500	3.1%	-200	-1.2%
Construction	16,700	16,200	16,900	500	3.1%	-200	-1.2%
Manufacturing	34,000	34,000	34,000	0	0.0%	0	0.0%
Durable Goods	25,100	24,900	25,100	200	0.8%	0	0.0%
Trade, Transportation and Utilities	61,300	61,100	60,200	200	0.3%	1,100	1.8%
Wholesale Trade	11,400	11,300	10,600	100	0.9%	800	7.6%
Retail Trade	32,000	31,700	31,600	300	1.0%	400	1.3%
General Merchandise Stores	7,100	7,100	7,000	0	0.0%	100	1.4%
Other Gen Merch Stores	5,300	5,200	5,200	100	1.9%	100	1.9%
Transportation, Warehousing and Utilities	17,900	18,100	18,000	-200	-1.1%	-100	-0.6%
Information	1,900	1,900	1,900	0	0.0%	0	0.0%
Financial Activities	9,300	9,300	9,400	0	0.0%	-100	-1.1%
Professional and Business Services	28,300	27,800	28,600	500	1.8%	-300	-1.1%
Employment Services	3,100	3,100	3,200	0	0.0%	-100	-3.1%
Education and Health Services	51,900	51,900	50,900	0	0.0%	1,000	2.0%
Educational Services	5,800	5,900	5,500	-100	-1.7%	300	5.5%
Health Care and Social Assistance	46,100	46,000	45,400	100	0.2%	700	1.5%
General Medical and Surgical Hospitals	13,900	13,900	13,800	0	0.0%	100	0.7%
Leisure and Hospitality	31,700	31,300	32,600	400	1.3%	-900	-2.8%
Arts, Entertainment and Recreation	3,600	3,500	3,900	100	2.9%	-300	-7.7%
Food Services and Drinking Places	28,100	27,800	28,700	300	1.1%	-600	-2.1%
Other Services	14,700	14,600	14,400	100	0.7%	300	2.1%
<b>Total Government</b>	<b>32,600</b>	<b>32,600</b>	<b>33,000</b>	<b>0</b>	<b>0.0%</b>	<b>-400</b>	<b>-1.2%</b>
Federal Government	2,000	2,000	2,000	0	0.0%	0	0.0%
State Government	4,400	4,400	4,300	0	0.0%	100	2.3%
Local Government	26,200	26,200	26,700	0	0.0%	-500	-1.9%
Local Government Educational Services	15,400	15,400	15,800	0	0.0%	-400	-2.5%

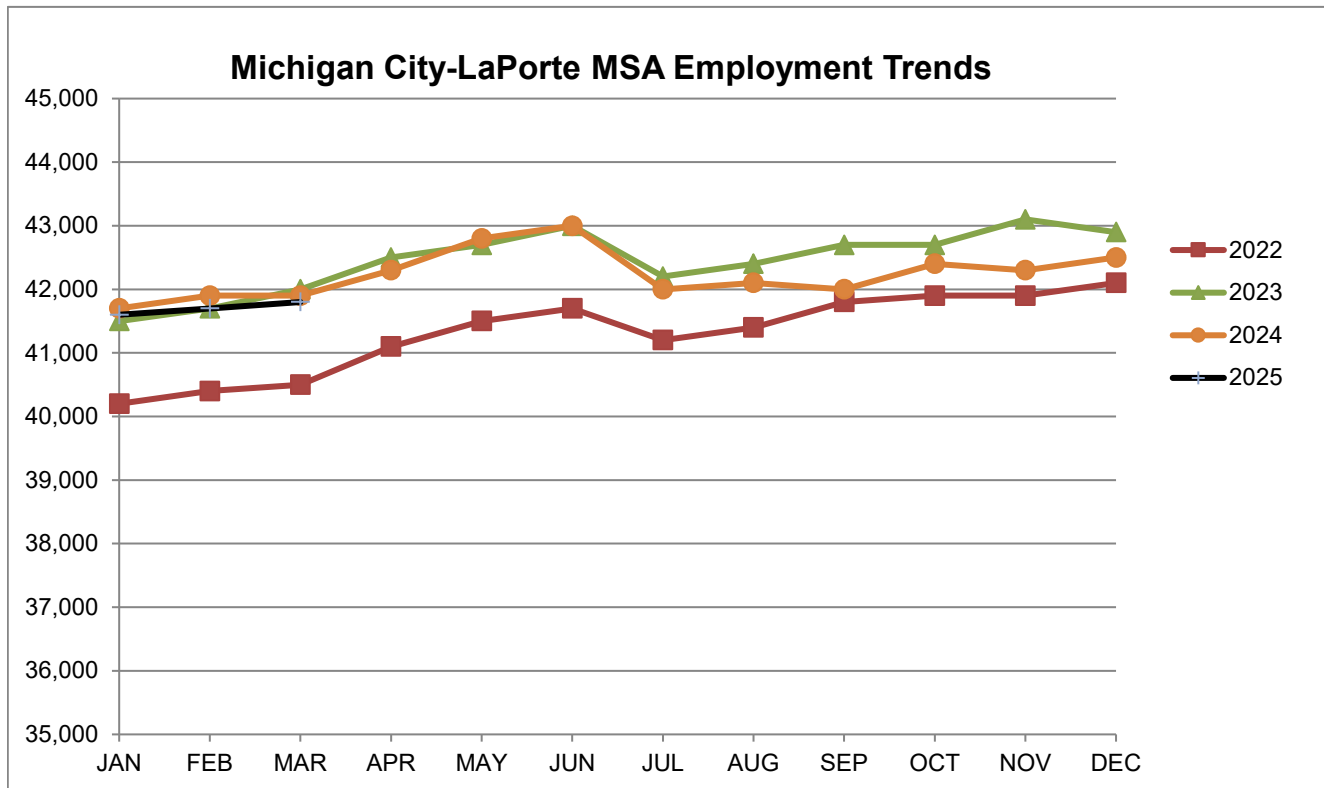
Source: Indiana Dept of Workforce Development, Research and Analysis, Current Employment Statistics



Source: Indiana Department of Workforce Development, Research & Analysis, Current Employment Statistics | Note: Historical data for the most recent 4 years (both seasonally adjusted and not seasonally adjusted) are revised near the beginning of each calendar year, prior to the release of January estimates for statewide data.

Michigan City-LaPorte MSA							
Wage and Salaried Employment	March 2025			# Change	% Change	# Change	% Change
Industry	Mar-25	Feb-25	Mar-24	Feb-25 to Mar-25		Mar-24 to Mar-25	
<b>Total Nonfarm</b>	<b>41,800</b>	<b>41,700</b>	<b>41,900</b>	<b>100</b>	<b>0.2%</b>	<b>-100</b>	<b>-0.2%</b>
<b>Total Private</b>	<b>35,200</b>	<b>35,100</b>	<b>35,500</b>	<b>100</b>	<b>0.3%</b>	<b>-300</b>	<b>-0.9%</b>
Goods Producing	10,700	10,600	10,700	100	0.9%	0	0.0%
Service Providing	31,100	31,100	31,200	0	0.0%	-100	-0.3%
Private Service Providing	24,500	24,500	24,800	0	0.0%	-300	-1.2%
Mining, Logging and Construction	2,200	2,200	2,200	0	0.0%	0	0.0%
Manufacturing	8,500	8,400	8,500	100	1.2%	0	0.0%
Trade, Transportation & Utilities	8,300	8,400	8,600	-100	-1.2%	-300	-3.5%
Wholesale Trade	1,900	1,800	1,900	100	5.6%	0	0.0%
Retail Trade	4,900	4,900	4,900	0	0.0%	0	0.0%
Information	200	200	200	0	0.0%	0	0.0%
Financial Activities	1,300	1,300	1,300	0	0.0%	0	0.0%
Professional and Business Services	2,600	2,600	2,700	0	0.0%	-100	-3.7%
Education and Health Services	5,900	5,900	5,900	0	0.0%	0	0.0%
Leisure and Hospitality	4,700	4,600	4,600	100	2.2%	100	2.2%
Other Services	1,500	1,500	1,500	0	0.0%	0	0.0%
<b>Total Government</b>	<b>6,600</b>	<b>6,600</b>	<b>6,400</b>	<b>0</b>	<b>0.0%</b>	<b>200</b>	<b>3.1%</b>
Federal Government	200	200	200	0	0.0%	0	0.0%
State Government	2,000	2,000	1,900	0	0.0%	100	5.3%
Local Government	4,400	4,400	4,300	0	0.0%	100	2.3%
Local Government Educational Services	2,500	2,500	2,500	0	0.0%	0	0.0%

Source: Indiana Dept of Workforce Development, Research and Analysis, Current Employment Statistics



Source: Indiana Department of Workforce Development, Research & Analysis, Current Employment Statistics | Note: Historical data for the most recent 4 years (both seasonally adjusted and not seasonally adjusted) are revised near the beginning of each calendar year, prior to the release of January estimates for statewide data.

Frequently Listed Jobs	
Top 20 job listings by number of openings in Region 1 in the past month	
Rank	Occupations
1	Farmworkers and Laborers, Crop, Nursery, and Greenhouse
2	Fast Food and Counter Workers
3	New Accounts Clerks
4	Tellers
5	Structural Metal Fabricators and Fitters
6	Laborers and Freight, Stock, and Material Movers, Hand
7	Construction Laborers
8	Sales and Related Workers, All Other
9	Maintenance and Repair Workers, General
10	General and Operations Managers
11	Healthcare Support Workers, All Other
12	Preschool Teachers, Except Special Education
13	Industrial Engineers
14	Electrical and Electronic Engineering Technologists and Technicians
15	Human Resources Specialists
16	Public Safety Telecommunicators
17	Electrical and Electronic Equipment Assemblers
18	Loan Officers
19	Maintenance Workers, Machinery
20	Shipping, Receiving, and Inventory Clerks

\* Due to an upgrade in the reporting system, there is a notable change in Job Postings recorded. The tool used to measure Job Postings was upgraded to prevent malicious or false postings. While customers adjust to the enhancements a drop in the record is to be expected.

Source: Indiana Workforce Development, Indiana Career Connect

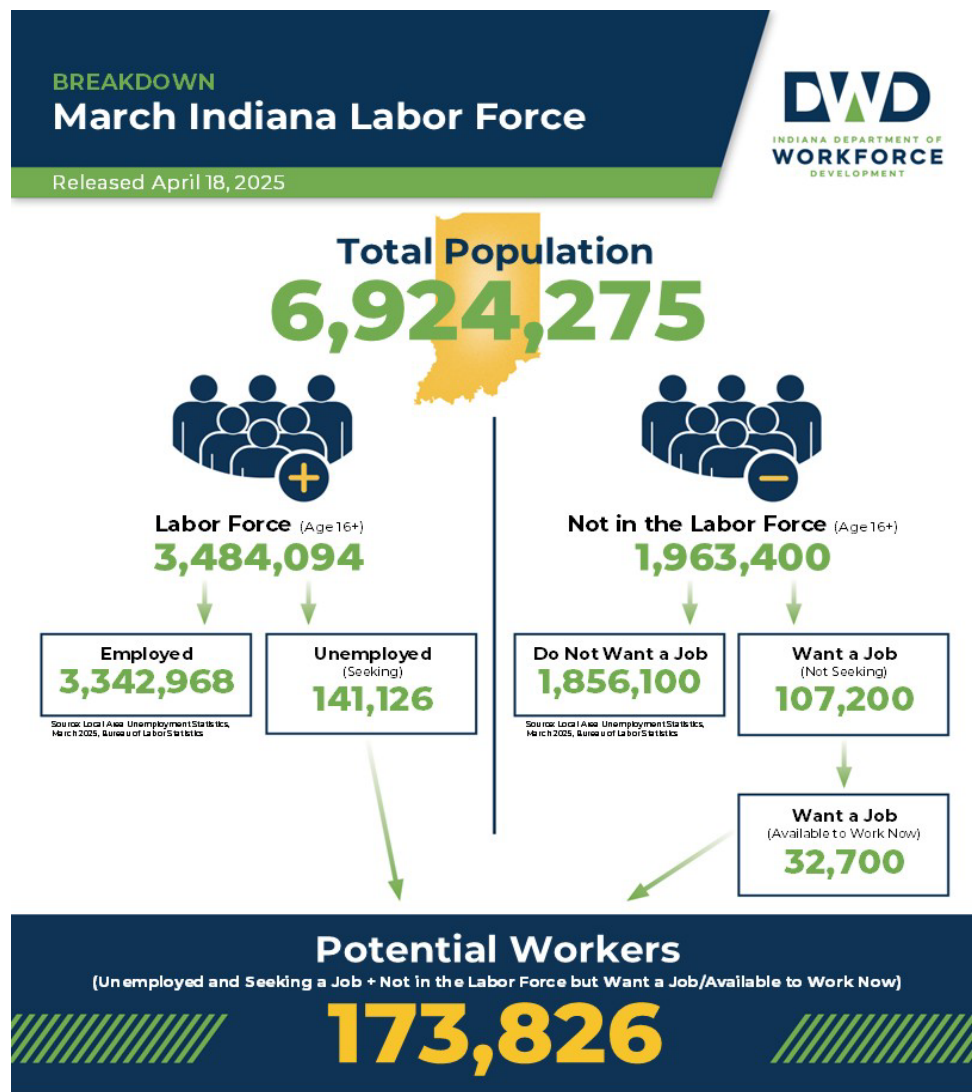
Applicant Pool	
Top 20 occupations desired by applicants on their resumes in the past 12 months	
Occupations	# of applicants
Production Workers, All Other	918
Helpers--Production Workers	809
Laborers and Freight, Stock, and Material Movers, Hand	756
Customer Service Representatives	621
Assemblers and Fabricators, All Other	559
Cashiers	531
Heavy and Tractor-Trailer Truck Drivers	519
Construction Laborers	421
Office Clerks, General	353
Carpenters	305
Managers, All Other	277
Maintenance and Repair Workers, General	272
Industrial Truck and Tractor Operators	269
Welders, Cutters, Solderers, and Brazers	261
Office and Administrative Support Workers, All Other	240
Retail Salespersons	240
Construction and Related Workers, All Other	237
Janitors and Cleaners, Except Maids and Housekeeping Cleaners	237
Extraction Workers, All Other	225
Receptionists and Information Clerks	221

Source: Indiana Workforce Development, Indiana Career Connect

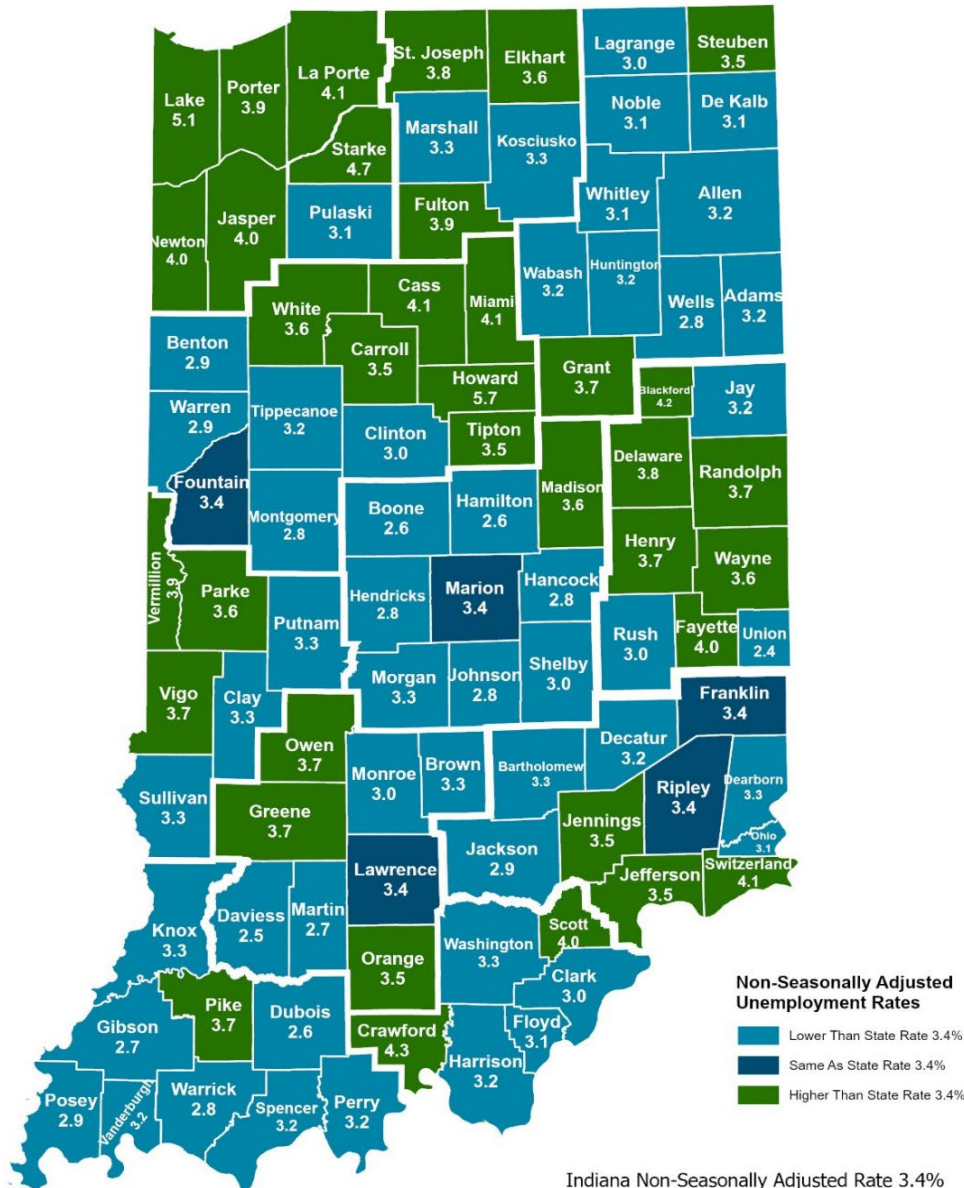


Consumer Price Index (CPI-U Change), Unadjusted Percent Change to March 2025 from						
CPI Item	Mar-24	Feb-25	Mar-24	Feb-25	Mar-24	Feb-25
	Chicago-Naperville-Elgin, IN-IL-WI		U.S. City		Midwest Region*	
All Items	3.7%	0.5%	2.4%	0.2%	2.7%	0.3%
Food & Beverages	2.4%	0.6%	2.9%	0.4%	2.7%	0.7%
Housing	5.4%	0.6%	3.7%	0.3%	5.1%	0.5%
Apparel	5.2%	1.6%	0.3%	1.0%	1.8%	0.4%
Transportation	-0.4%	0.1%	-0.9%	-0.4%	-1.7%	-0.1%
Medical Care	2.9%	0.3%	2.6%	0.2%	2.3%	-0.1%
Recreation	3.8%	0.2%	1.9%	0.0%	1.4%	0.3%
Education & Communication	2.2%	-0.2%	0.5%	0.1%	0.5%	0.2%
Other Goods & Services	8.0%	0.7%	3.8%	1.0%	4.0%	0.9%

\*Midwest region = Midwest Urban Average. Midwest Region includes Illinois, Indiana, Iowa, Kansas, Michigan, Minnesota, Missouri, Nebraska, North Dakota, Ohio, South Dakota and Wisconsin | Source: U.S. Bureau of Labor Statistics



## County Unemployment Rates March 2025



**Non-Seasonally Adjusted  
Unemployment Rates**

- Lower Than State Rate 3.4%
- Same As State Rate 3.4%
- Higher Than State Rate 3.4%

Indiana Non-Seasonally Adjusted Rate 3.4%  
Indiana Seasonally Adjusted Rate 4.1%  
Source: DWD, Local Area Unemployment Statistics

### Questions?

Please contact the DWD  
Research and Analysis  
Regional Labor Analyst  
listed below:

Kathy Jaworski  
Regional Labor Analyst  
Research and Analysis

[Indiana Department of  
Workforce Development](https://www.in.gov/dwd/)

219-841-6347

[kjaworski@dwd.in.gov](mailto:kjaworski@dwd.in.gov)