



HOOSIERS BY THE NUMBERS

Your premier source for labor market information for Indiana.

DWD

INDIANA DEPARTMENT OF
WORKFORCE
DEVELOPMENT

LABOR MARKET REVIEW



February 2025 Labor Market Review

Reported by: Kathy Jaworski

Regional Workforce Analyst

[Email Kathy](#)

kjaworski@dwd.in.gov

Tel: 219-841-6347

DWD

INDIANA DEPARTMENT OF
WORKFORCE
DEVELOPMENT



LABOR MARKET REVIEW

Economic Growth Region 1

Statistical Data Report for February 2025, Released April 2025

State Employment and Unemployment

Unemployment rates were higher in February in 1 state and stable in 49 states and the District of Columbia, the U.S. Bureau of Labor Statistics reported. Thirty states had jobless rate increases from a year earlier, 1 state had a decrease, and 19 states and the District had little change. The national unemployment rate changed little over the month at 4.1 percent but was 0.2 percentage point higher than in February 2024.

Nonfarm payroll employment increased in 3 states and was essentially unchanged in 47 states and the District in February 2025. Over the year, nonfarm payroll employment increased in 17 states and was essentially unchanged in 33 states and the District.



Economic Growth Region (EGR) 1

Jasper, Lake, LaPorte, Newton, Porter, Pulaski and Starke Counties

February 2025 Labor Force Estimates (not seasonally adjusted)						
Area	Labor Force	Employed	Unemployed	Feb-25	Jan-25	Feb-24
U.S.	170,116,000	162,544,000	7,572,000	4.5%	4.4%	4.2%
IN	3,473,038	3,316,769	156,269	4.5%	4.5%	4.4%
Lake-Porter-Jasper Div	353,896	331,742	22,154	6.3%	6.1%	5.8%
MichCity-LaPorte MSA	51,980	49,189	2,791	5.4%	5.3%	5.2%
EGR 1	422,147	396,281	25,866	6.1%	6.0%	5.7%
Lake Co.	241,662	225,445	16,217	6.7%	6.5%	6.2%
Porter Co.	88,509	83,899	4,610	5.2%	5.2%	4.8%
LaPorte Co.	51,980	49,189	2,791	5.4%	5.3%	5.2%
Newton Co.	6,777	6,384	393	5.8%	5.7%	5.1%
Jasper Co.	16,948	16,014	934	5.5%	5.4%	5.0%
Starke Co.	9,440	8,815	625	6.6%	6.8%	6.0%
Pulaski Co.	6,831	6,535	296	4.3%	4.2%	3.8%
East Chicago	11,168	10,248	920	8.2%	7.7%	7.0%
Hammond	36,541	34,007	2,534	6.9%	6.8%	6.5%
Munster	11,913	11,311	602	5.1%	5.1%	4.6%
Dyer	8,396	7,994	402	4.8%	4.6%	4.9%
Schererville	15,818	14,967	851	5.4%	5.3%	4.9%
Crown Point	16,740	15,763	977	5.8%	5.8%	5.7%
Griffith	9,395	8,794	601	6.4%	6.2%	5.9%
Highland	12,292	11,581	711	5.8%	6.1%	5.0%
Gary	24,423	22,009	2,414	9.9%	9.6%	9.1%
Merrillville	18,119	16,830	1,289	7.1%	6.9%	6.5%
Hobart	15,413	14,371	1,042	6.8%	6.8%	6.4%
Lake Station	5,712	5,094	618	10.8%	9.8%	9.9%
Portage	19,058	17,871	1,187	6.2%	6.0%	5.4%
Chesterton	7,445	7,066	379	5.1%	5.1%	4.7%
Valparaiso	17,539	16,775	764	4.4%	4.3%	4.3%
Michigan City	13,668	12,871	797	5.8%	5.7%	5.4%
LaPorte	11,127	10,577	550	4.9%	4.8%	4.9%

Unemployment Rates by State (seasonally adjusted): February 2025

U.S. - 4.1%

Illinois - 4.8%

Indiana - 4.3%

Kentucky - 5.3%

Michigan - 5.4%

Ohio - 4.7%

Source: U.S. Department of Labor, Bureau of Labor Statistics

Unemployment Rank by County (of 92 counties): February 2025

#2 - Lake (6.7%)

#4 - Starke (6.6%)

#5 - Newton (5.8%)

#6 - Jasper (5.5%)

#7 - LaPorte (5.4%)

#12 - Porter (5.2%)

#56 - Pulaski (4.3%)

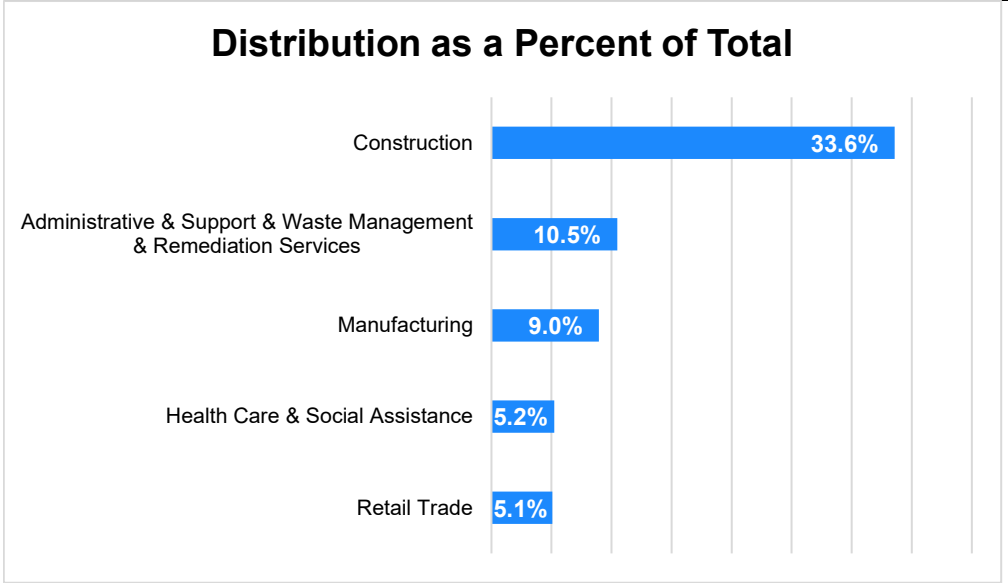
Source: Indiana Department of Workforce Development, Research and Development, Local Area Unemployment Statistics

Source: Indiana Department of Workforce Development, Research & Analysis, Local Area Unemployment Statistics | Unemployment Statistics Released:03/25 | Notes: The data displayed are presented as estimates only. The most recent month's data are always preliminary and are revised when the next month's data are released. Gary Division has been renamed to Lake-Porter-Jasper Counties Division but still includes Newton County. Michigan City-LaPorte MSA: Laporte County

Statewide Average Weekly Hours & Earnings by Industry for February 2025			
Industry	Avg. Earnings per hr	Avg. # of hours worked per week	Avg. Earnings per week
Construction	\$34.32	36.1	\$1,238.95
Manufacturing	\$26.52	42.6	\$1,129.75
Durable Goods	\$27.44	44.4	\$1,218.34
Fabricated Metal Product Manufacturing	\$25.93	42.1	\$1,091.65
Transportation Equipment Manufacturing	\$29.63	44.8	\$1,327.42
Non-Durable Goods	\$23.99	38.3	\$918.82
Retail Trade	\$19.96	27.7	\$552.89
Financial Activities	\$28.70	38.0	\$1,090.60
Health Care and Social Assistance	\$31.25	33.0	\$1,031.25
Accommodation and Food Services	\$16.55	23.2	\$383.96
Food Services and Drinking Places	\$16.11	22.5	\$362.48

Source: Indiana Department of Workforce Development, Current Employment Statistics

Percentage of Unemployment Claims for Top 5 Region 1 Industries February 2025



Source: Indiana Department of Workforce Development, Research and Analysis

WARN Notices

WARN Notices for Region 1 for February 2025				
Company	City	County	# affected	Notice Date

There are no WARN Notices for February 2025 for Region 1.

Significant WARN Notices for nearby locations				
Company	City	County	# Affected	Notice Date
US Arconic LLC Revised (3/27/25)	Lafayette	Tippecanoe	80	Feb-25
Four (4) companies in Cook County, IL	Chicago/Dolton	Cook, IL	682	Feb-25

Source: Indiana Department of Workforce Development, WARN Notices | For information on WARN Act requirements, you may go to the U.S. Department of Labor Employment Training Administration Fact Sheet: <https://www.doleta.gov/programs/factsht/warn.htm>

Unemployment Claims: February 2025

Region 1

Initial Claims

02/04/25 - 596(D)
02/11/25 - 479(D)
02/18/25 - 475(D)
02/25/25 - 510(D)

Continued Claims

02/04/25 - 3,844
02/11/25 - 3,821
02/18/25 - 3,862
02/25/25 - 3,965

Total Claims

02/04/25 - 4,440
02/11/25 - 4,300
02/18/25 - 4,337
02/25/25 - 4,475

State of Indiana

Initial Claims

02/04/25 - 3,489
02/11/25 - 3,107
02/18/25 - 3,087
02/25/25 - 3,062

Continued Claims

02/04/25 - 28,861
02/11/25 - 30,846
02/18/25 - 28,908
02/25/25 - 26,542

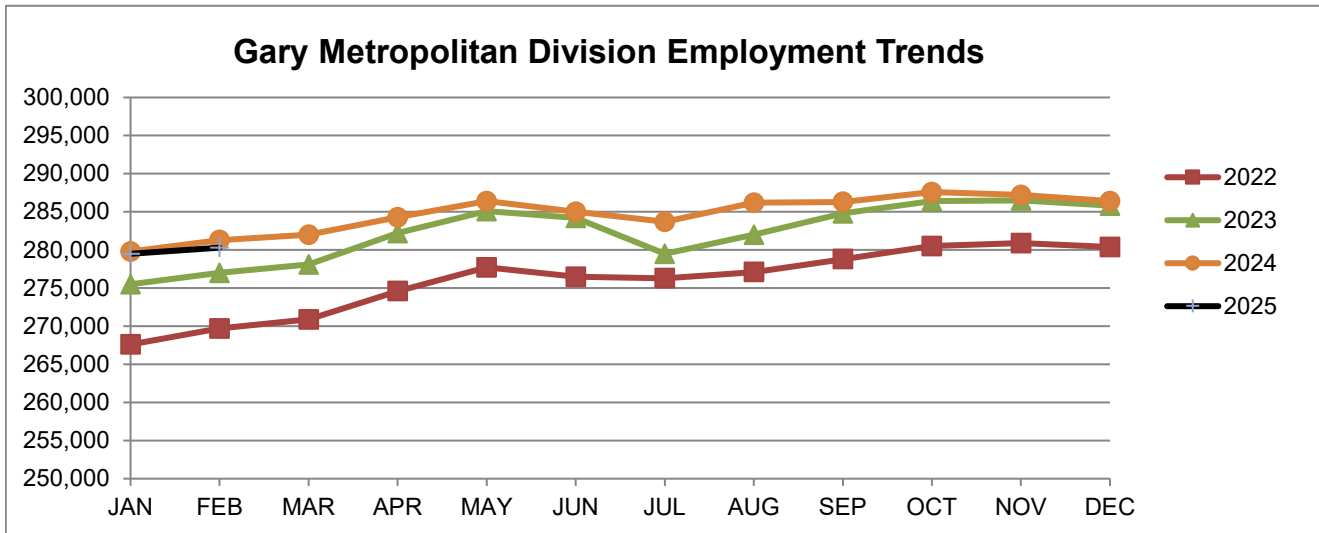
Total Claims

02/04/25 - 32,350
02/11/25 - 33,953
02/18/25 - 31,995
02/25/25 - 29,604

Notes: (D) Indicates one or more counties are excluded due to non-disclosure issues | Numbers subject to weekly revision | Source: Indiana Department of Workforce Development, Research and Analysis

Gary Metropolitan Division							
Wage and Salaried Employment	February 2025			# Change	% Change	# Change	% Change
Industry	Feb-25	Jan-25	Feb-24	Jan-25 to Feb-25		Feb-24 to Feb-25	
Total Nonfarm	280,300	279,500	281,300	800	0.3%	-1,000	-0.4%
Total Private	248,100	247,600	248,400	500	0.2%	-300	-0.1%
Goods Producing	50,300	49,900	50,400	400	0.8%	-100	-0.2%
Service Providing	230,000	229,600	230,900	400	0.2%	-900	-0.4%
Private Service Providing	197,800	197,700	198,000	100	0.1%	-200	-0.1%
Mining and Logging	100	100	100	0	0.0%	0	0.0%
Mining, Logging and Construction	16,300	16,100	16,400	200	1.2%	-100	-0.6%
Construction	16,200	16,000	16,300	200	1.3%	-100	-0.6%
Manufacturing	34,000	33,800	34,000	200	0.6%	0	0.0%
Durable Goods	24,900	24,800	25,100	100	0.4%	-200	-0.8%
Trade, Transportation and Utilities	61,000	61,300	60,300	-300	-0.5%	700	1.2%
Wholesale Trade	11,300	11,300	10,700	0	0.0%	600	5.6%
Retail Trade	31,700	31,700	31,500	0	0.0%	200	0.6%
General Merchandise Stores	7,100	7,200	7,100	-100	-1.4%	0	0.0%
Other Gen Merch Stores	5,200	5,200	5,300	0	0.0%	-100	-1.9%
Transportation, Warehousing and Utilities	18,000	18,300	18,100	-300	-1.6%	-100	-0.6%
Information	1,900	1,900	1,900	0	0.0%	0	0.0%
Financial Activities	9,300	9,300	9,400	0	0.0%	-100	-1.1%
Professional and Business Services	27,700	27,700	28,700	0	0.0%	-1,000	-3.5%
Employment Services	3,000	3,000	3,200	0	0.0%	-200	-6.3%
Education and Health Services	51,900	51,800	51,300	100	0.2%	600	1.2%
Educational Services	6,000	5,700	6,000	300	5.3%	0	0.0%
Health Care and Social Assistance	45,900	46,100	45,300	-200	-0.4%	600	1.3%
General Medical and Surgical Hospitals	13,800	13,900	13,700	-100	-0.7%	100	0.7%
Leisure and Hospitality	31,400	31,200	32,100	200	0.6%	-700	-2.2%
Arts, Entertainment and Recreation	3,500	3,500	3,700	0	0.0%	-200	-5.4%
Food Services and Drinking Places	27,900	27,700	28,400	200	0.7%	-500	-1.8%
Other Services	14,600	14,500	14,300	100	0.7%	300	2.1%
Total Government	32,200	31,900	32,900	300	0.9%	-700	-2.1%
Federal Government	2,000	2,000	2,000	0	0.0%	0	0.0%
State Government	4,000	3,800	4,300	200	5.3%	-300	-7.0%
Local Government	26,200	26,100	26,600	100	0.4%	-400	-1.5%
Local Government Educational Services	15,400	15,400	15,700	0	0.0%	-300	-1.9%

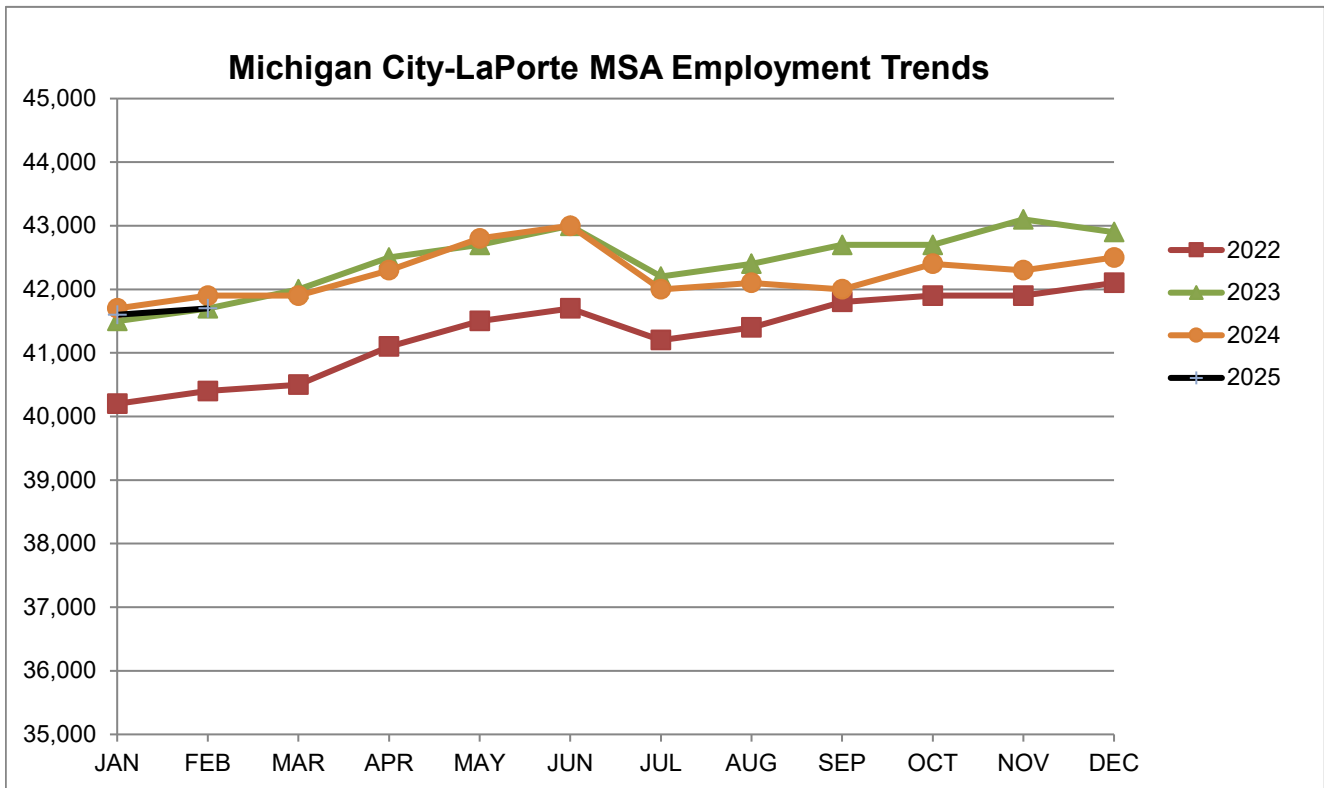
Source: Indiana Dept of Workforce Development, Research and Analysis, Current Employment Statistics



Source: Indiana Department of Workforce Development, Research & Analysis, Current Employment Statistics | Note: Historical data for the most recent 4 years (both seasonally adjusted and not seasonally adjusted) are revised near the beginning of each calendar year, prior to the release of January estimates for statewide data.

Michigan City-LaPorte MSA							
Wage and Salaried Employment	February 2025			# Change	% Change	# Change	% Change
Industry	Feb-25	Jan-25	Feb-24	Jan-25 to Feb-25	Feb-24 to Feb-25	Jan-25 to Feb-25	Feb-24 to Feb-25
Total Nonfarm	41,700	41,600	41,900	100	0.2%	-200	-0.5%
Total Private	35,100	35,200	35,500	-100	-0.3%	-400	-1.1%
Goods Producing	10,600	10,500	10,700	100	1.0%	-100	-0.9%
Service Providing	31,100	31,100	31,200	0	0.0%	-100	-0.3%
Private Service Providing	24,500	24,700	24,800	-200	-0.8%	-300	-1.2%
Mining, Logging and Construction	2,200	2,100	2,200	100	4.8%	0	0.0%
Manufacturing	8,400	8,400	8,500	0	0.0%	-100	-1.2%
Trade, Transportation & Utilities	8,400	8,500	8,600	-100	-1.2%	-200	-2.3%
Wholesale Trade	1,800	1,800	1,900	0	0.0%	-100	-5.3%
Retail Trade	4,900	4,900	4,900	0	0.0%	0	0.0%
Information	200	200	200	0	0.0%	0	0.0%
Financial Activities	1,300	1,300	1,300	0	0.0%	0	0.0%
Professional and Business Services	2,600	2,600	2,700	0	0.0%	-100	-3.7%
Education and Health Services	5,900	6,000	5,900	-100	-1.7%	0	0.0%
Leisure and Hospitality	4,600	4,600	4,600	0	0.0%	0	0.0%
Other Services	1,500	1,500	1,500	0	0.0%	0	0.0%
Total Government	6,600	6,400	6,400	200	3.1%	200	3.1%
Federal Government	200	200	200	0	0.0%	0	0.0%
State Government	2,000	1,900	1,900	100	5.3%	100	5.3%
Local Government	4,400	4,300	4,300	100	2.3%	100	2.3%
Local Government Educational Services	2,500	2,400	2,400	100	4.2%	100	4.2%

Source: Indiana Dept of Workforce Development, Research and Analysis, Current Employment Statistics



Source: Indiana Department of Workforce Development, Research & Analysis, Current Employment Statistics | Note: Historical data for the most recent 4 years (both seasonally adjusted and not seasonally adjusted) are revised near the beginning of each calendar year, prior to the release of January estimates for statewide data.

Frequently Listed Jobs	
Top 20 job listings by number of openings in Region 1 in the past month	
Rank	Occupations
1	Farmworkers and Laborers, Crop, Nursery, and Greenhouse
2	Cement Masons and Concrete Finishers
3	Home Health Aides
4	Personal Care Aides
5	Production Workers, All Other
6	Helpers--Production Workers
7	Construction Laborers
8	Bus and Truck Mechanics and Diesel Engine Specialists
9	Industrial Machinery Mechanics
10	Engineers, All Other
11	Fast Food and Counter Workers
12	Financial and Investment Analysts
13	Heavy and Tractor-Trailer Truck Drivers
14	New Accounts Clerks
15	Sales and Related Workers, All Other
16	Assemblers and Fabricators, All Other
17	Bookkeeping, Accounting, and Auditing Clerks
18	Computer, Automated Teller, and Office Machine Repairers
19	Construction and Related Workers, All Other
20	Driver/Sales Workers

Source: Indiana Workforce Development, Indiana Career Connect

Applicant Pool	
Top 20 occupations desired by applicants on their resumes in the past 12 months	
Occupations	# of applicants
Production Workers, All Other	916
Helpers--Production Workers	804
Laborers and Freight, Stock, and Material Movers, Hand	742
Customer Service Representatives	618
Assemblers and Fabricators, All Other	546
Cashiers	533
Heavy and Tractor-Trailer Truck Drivers	523
Construction Laborers	409
Office Clerks, General	365
Carpenters	302
Managers, All Other	288
Maintenance and Repair Workers, General	266
Welders, Cutters, Solderers, and Brazers	259
Industrial Truck and Tractor Operators	259
Retail Salespersons	253
Office and Administrative Support Workers, All Other	242
Janitors and Cleaners, Except Maids and Housekeeping Cleaners	236
Extraction Workers, All Other	228
Construction and Related Workers, All Other	222
Receptionists and Information Clerks	221

* Due to an upgrade in the reporting system, there is a notable change in Job Postings recorded. The tool used to measure Job Postings was upgraded to prevent malicious or false postings. While customers adjust to the enhancements a drop in the record is to be expected.

Source: Indiana Workforce Development, Indiana Career Connect

Consumer Price Index (CPI-U Change), Unadjusted Percent Change to February 2025 from						
CPI Item	Feb-24	Jan-25	Feb-24	Jan-25	Feb-24	Jan-25
	Chicago-Naperville-Elgin, IN-IL-WI		U.S. City		Midwest Region*	
All Items	3.8%	0.1%	2.8%	0.4%	3.1%	0.3%
Food & Beverages	1.9%	-0.2%	2.6%	0.2%	2.0%	0.0%
Housing	4.9%	0.2%	3.9%	0.4%	5.0%	0.6%
Apparel	2.4%	-0.3%	0.6%	3.4%	1.6%	3.4%
Transportation	4.0%	-0.4%	1.7%	0.2%	1.2%	-0.4%
Medical Care	3.0%	-0.5%	2.9%	0.2%	2.9%	-0.5%
Recreation	3.1%	1.5%	1.8%	0.5%	1.2%	0.5%
Education & Communication	2.4%	0.5%	0.3%	0.3%	0.2%	0.2%
Other Goods & Services	7.1%	0.7%	3.3%	0.9%	3.9%	0.8%

*Midwest region = Midwest Urban Average. Midwest Region includes Illinois, Indiana, Iowa, Kansas, Michigan, Minnesota, Missouri, Nebraska, North Dakota, Ohio, South Dakota and Wisconsin | Source: U.S. Bureau of Labor Statistics

SNAPSHOT

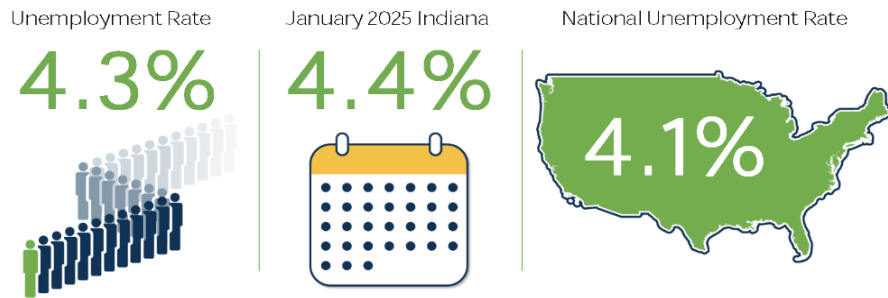
February Indiana Employment

Released March 28, 2025

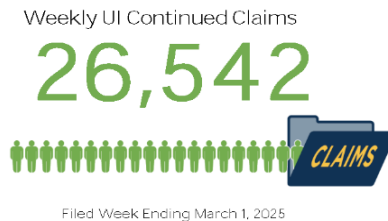


Unemployment Rate

*seasonally adjusted



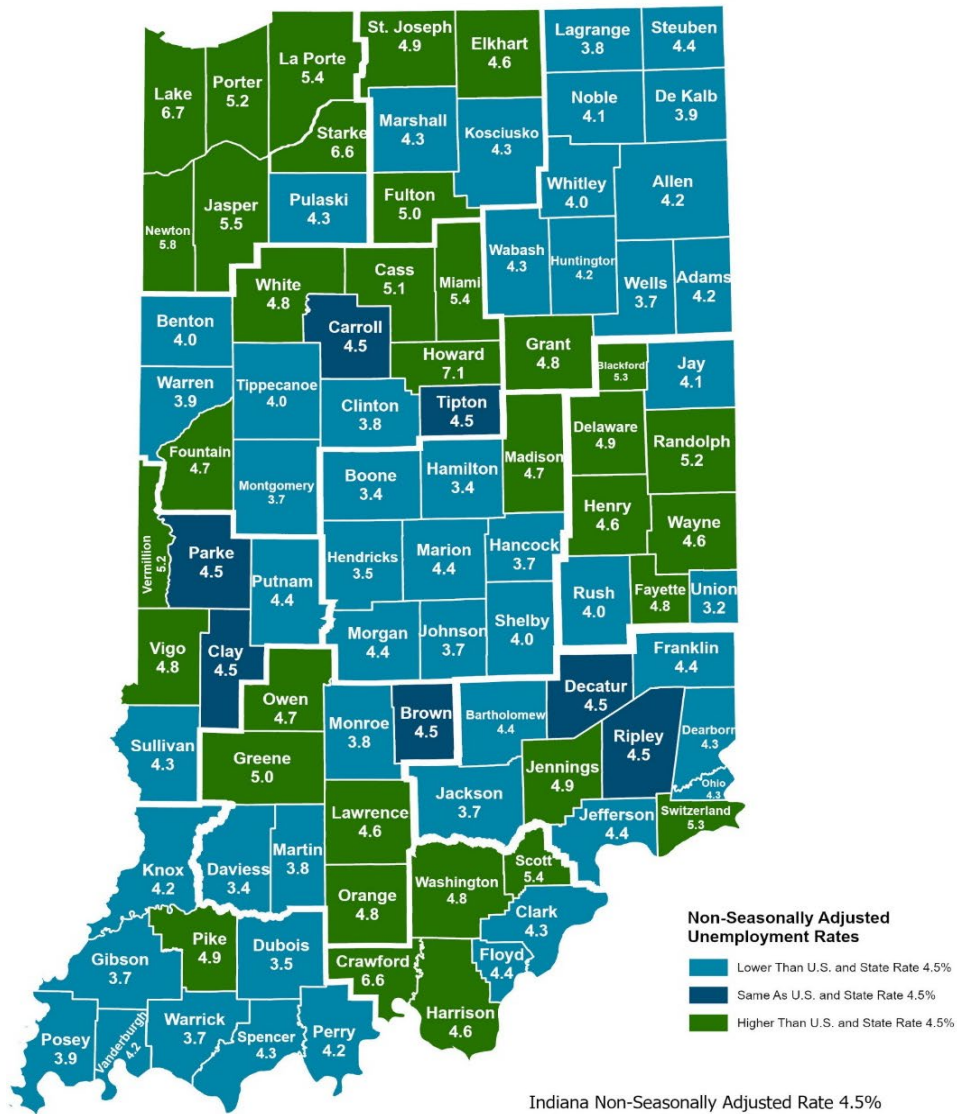
LABOR FORCE PARTICIPATION RATE*



Source: Local Area Unemployment Statistics, Bureau of Labor Statistics, Indiana Career Connect.

*The percentage of Hoosiers 16 and older who are either working or actively looking for work. Those not in the labor force include primarily, students, retirees and other non-working populations, such as individuals unable to work due to a disability or illness, or adults responsible for their family's childcare needs.

County Unemployment Rates February 2025



Questions?
 Please contact the DWD
 Research and Analysis
 Regional Labor Analyst
 listed below:

Kathy Jaworski
 Regional Labor Analyst
 Research and Analysis

[Indiana Department of Workforce Development](https://www.in.gov/workforce)

219-841-6347

kjaworski@dwd.in.gov