



HOOSIERS BY THE NUMBERS

Your premier source for labor market information for Indiana.



INDIANA
DEPARTMENT OF
WORKFORCE
DEVELOPMENT

LABOR MARKET REVIEW



February 2021 Labor Market Review

Reported by: Kathy Jaworski

Regional Workforce Analyst

[Email Kathy](#)

kjaworski@dwd.in.gov

Tel: 219-841-6347



INDIANA
DEPARTMENT OF
WORKFORCE
DEVELOPMENT

LABOR MARKET REVIEW

Economic Growth Region 1

Statistical Data Report for February 2021, Released April 2021

State Employment and Unemployment

Unemployment rates were lower in February in 23 states and the District of Columbia, higher in 4 states, and stable in 23 states, the U.S. Bureau of Labor Statistics reported. Forty-five states and the District had jobless rate increases from a year earlier and five states had little or no change. The national unemployment rate, 6.2 percent, was little changed over the month, but was 2.7 percentage points higher than in February 2020. Nonfarm payroll employment increased in 11 states, decreased in 3 states, and was essentially unchanged in 36 states and the District in February 2021. Over the year, nonfarm payroll employment decreased in 48 states and the District and was essentially unchanged in 2 states.



Economic Growth Region (EGR) 1

Jasper, Lake, LaPorte, Newton, Porter, Pulaski and Starke Counties

Unemployment Rates by State (seasonally adjusted): February 2021

U.S. - 6.2%

Illinois - 7.4%

Indiana - 4%

Kentucky - 5.2%

Michigan - 5.2%

Ohio - 5%

Source: U.S. Department of Labor, Bureau of Labor Statistics

Unemployment Rank by County (of 92 counties): February 2021

#2 - Lake (7.4%)

#3 - LaPorte (6.9%)

#5 - Starke (6.1%)

#15 - Newton (5.3%)

#17 - Porter (5.3%)

#19 - Jasper (5.2%)

#51 - Pulaski (4.2%)

Source: Indiana Department of Workforce Development, Research and Development, Local Area Unemployment Statistics

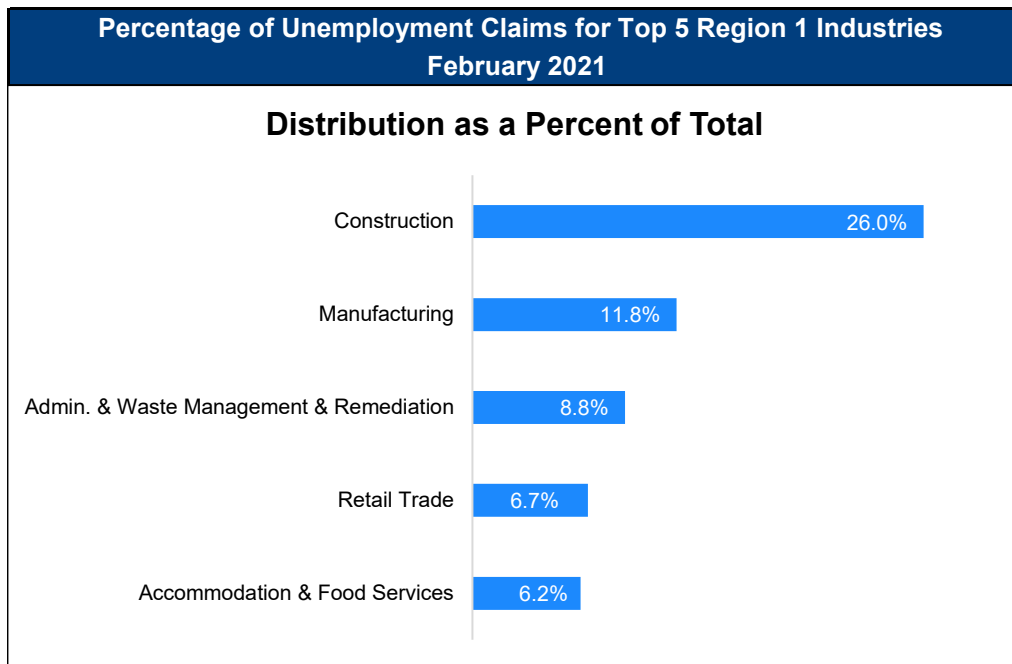
Labor Market Review EGR 1

February 2021 Labor Force Estimates (not seasonally adjusted)						
Area	Labor Force	Employed	Unemployed	Feb-21	Jan-21	Feb-20
U.S.	160,008,000	149,522,000	10,486,000	6.6%	6.8%	3.8%
IN	3,300,855	3,144,768	156,087	4.7%	4.7%	3.4%
Gary Metro Div	323,588	301,904	21,684	6.7%	6.7%	5.0%
MichCity-LaPorte MSA	46,900	43,672	3,228	6.9%	6.8%	4.8%
EGR 1	386,349	360,590	25,759	6.7%	6.6%	4.9%
Lake Co.	219,732	203,505	16,227	7.4%	7.5%	5.3%
Porter Co.	82,112	77,787	4,325	5.3%	5.0%	4.2%
LaPorte Co.	46,900	43,672	3,228	6.9%	6.8%	4.8%
Newton Co.	6,475	6,131	344	5.3%	4.8%	5.1%
Jasper Co.	15,269	14,481	788	5.2%	4.7%	4.7%
Starke Co.	9,556	8,975	581	6.1%	5.8%	4.8%
Pulaski Co.	6,305	6,039	266	4.2%	3.9%	3.8%
East Chicago	9,633	8,529	1,104	11.5%	12.1%	7.0%
Hammond	32,607	29,988	2,619	8.0%	8.1%	6.0%
Munster	10,924	10,456	468	4.3%	4.3%	3.4%
Dyer	8,208	7,875	333	4.1%	4.2%	4.1%
Schererville	15,119	14,370	749	5.0%	4.7%	3.8%
Crown Point	14,840	14,035	805	5.4%	4.9%	4.3%
Griffith	8,350	7,797	553	6.6%	6.7%	5.0%
Highland	11,724	11,047	677	5.8%	4.8%	4.9%
Gary	26,152	22,863	3,289	12.6%	14.8%	6.8%
Merrillville	16,261	14,926	1,335	8.2%	8.5%	5.5%
Hobart	14,068	12,983	1,085	7.7%	7.3%	6.0%
Lake Station	4,701	4,228	473	10.1%	10.3%	7.8%
Portage	17,091	16,035	1,056	6.2%	6.1%	5.0%
Chesterton	6,741	6,379	362	5.4%	5.6%	3.9%
Valparaiso	15,834	15,087	747	4.7%	4.7%	3.8%
Michigan City	12,505	11,503	1,002	8.0%	9.2%	4.8%
LaPorte	9,400	8,732	668	7.1%	7.3%	5.0%

Source: Indiana Department of Workforce Development, Research & Analysis, Local Area Unemployment Statistics | Unemployment Statistics Released:03/21 | Notes: The data displayed are presented as estimates only. The most recent month's data are always preliminary and are revised when the next month's data are released.

Statewide Average Weekly Hours & Earnings by Industry for February 2021			
Industry	Avg. Earnings per hr	Avg. # of hours worked per week	Avg. Earnings per week
Construction	\$27.84	37.9	\$1,055.14
Manufacturing	\$21.33	43.8	\$934.25
Durable Goods	\$22.55	44.2	\$996.71
Fabricated Metal Product Manufacturing	\$20.88	38.8	\$810.14
Transportation Equipment Manufacturing	\$23.66	40.4	\$955.86
Non-Durable Goods	\$18.41	42.8	\$787.95
Retail Trade	\$16.20	30.2	\$489.24
Financial Activities	\$25.72	36.3	\$933.64
Health Care and Social Assistance	\$25.32	33.3	\$843.16
Accommodation and Food Services	\$12.92	22.1	\$285.53
Food Services and Drinking Places	\$12.86	21.7	\$279.06

Source: Indiana Department of Workforce Development, Current Employment Statistics



Source: Indiana Department of Workforce Development, Research and Analysis

WARN Notices

WARN Notices for Region 1 for February 2021				
Company	City	County	# affected	Notice Date

There are no WARN Notices for February 2021 for Region 1.

Significant WARN Notices for nearby locations				
Company	City	County	# Affected	Notice Date

There are no WARN Notices for nearby locations

Source: Indiana Department of Workforce Development, WARN Notices | For information on WARN Act requirements, you may go to the U.S. Department of Labor Employment Training Administration Fact Sheet:

<https://www.doleta.gov/programs/factsheet/warn.htm>

Unemployment Claims: February 2021

Region 1

Initial Claims

02/06/21 - 3,483

02/13/21 - 2,699

02/20/21 - 2,060

02/27/21 - 2,392

Continued Claims

02/06/21 - 7,692

02/13/21 - 7,607

02/20/21 - 7,451

02/27/21 - 6,928

Total Claims

02/06/21 - 11,175

02/13/21 - 10,306

02/20/21 - 9,511

02/27/21 - 9,320

State of Indiana

Initial Claims

02/06/21 - 13,508

02/13/21 - 12,287

02/20/21 - 9,735

02/27/21 - 10,081

Continued Claims

02/06/21 - 77,782

02/13/21 - 73,668

02/20/21 - 72,770

02/27/21 - 69,343

Total Claims

02/06/21 - 91,290

02/13/21 - 85,955

02/20/21 - 82,505

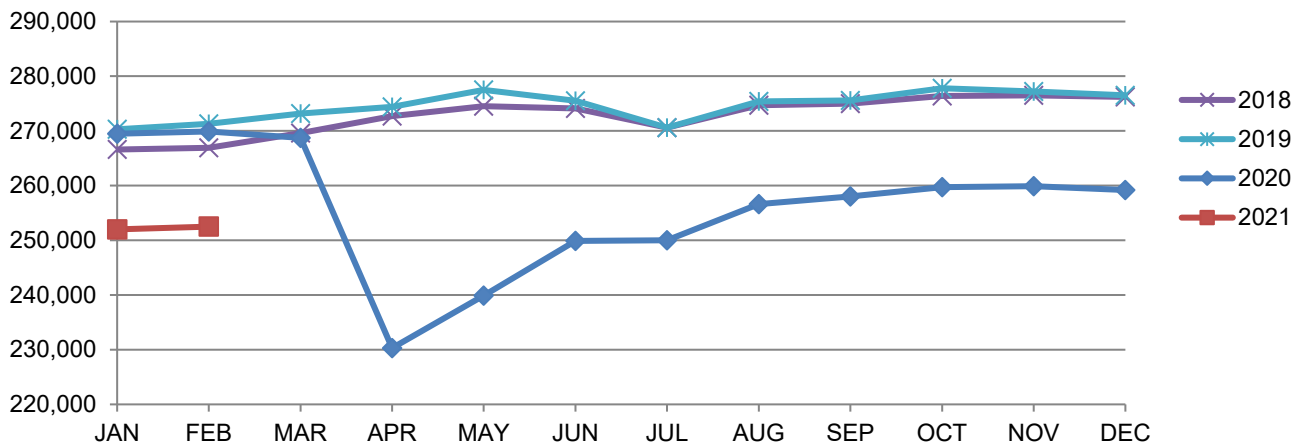
02/27/21 - 79,424

(D) Indicates one or more counties are excluded due to non-disclosure issues | Source: Indiana Department of Workforce Development, Research and Analysis

Gary Metropolitan Division							
Wage and Salaried Employment	February 2021			# Change	% Change	# Change	% Change
Industry	Feb-21	Jan-21	Feb-20	Jan-21 to Feb-21		Feb-20 to Feb-21	
Total Nonfarm	252,500	252,000	269,900	500	0.2%	-17,400	-6.5%
Total Private	221,400	221,400	236,400	0	0.0%	-15,000	-6.4%
Goods Producing	46,700	47,200	50,400	-500	-1.1%	-3,700	-7.3%
Service Providing	205,800	204,800	219,500	1,000	0.5%	-13,700	-6.2%
Private Service Providing	174,700	174,200	186,000	500	0.3%	-11,300	-6.1%
Mining and Logging	100	100	200	0	0.0%	-100	-50.0%
Mining, Logging and Construction	13,600	14,300	15,600	-700	-4.9%	-2,000	-12.8%
Construction	13,500	14,200	15,400	-700	-4.9%	-1,900	-12.3%
Manufacturing	33,100	32,900	34,800	200	0.6%	-1,700	-4.9%
Durable Goods	24,600	24,600	26,500	0	0.0%	-1,900	-7.2%
Trade, Transportation and Utilities	56,200	56,800	57,700	-600	-1.1%	-1,500	-2.6%
Wholesale Trade	8,800	8,800	9,200	0	0.0%	-400	-4.4%
Retail Trade	30,700	31,100	32,200	-400	-1.3%	-1,500	-4.7%
General Merchandise Stores	6,500	6,700	6,600	-200	-3.0%	-100	-1.5%
Other Gen Merch Stores	4,600	4,700	4,500	-100	-2.1%	100	2.2%
Transportation, Warehousing and Utilities	16,700	16,900	16,300	-200	-1.2%	400	2.5%
Information	1,600	1,600	1,900	0	0.0%	-300	-15.8%
Financial Activities	8,400	8,400	8,800	0	0.0%	-400	-4.6%
Professional and Business Services	23,800	23,300	24,600	500	2.2%	-800	-3.3%
Employment Services	3,400	3,400	3,800	0	0.0%	-400	-10.5%
Education and Health Services	46,100	45,700	49,900	400	0.9%	-3,800	-7.6%
Educational Services	4,700	4,300	5,500	400	9.3%	-800	-14.6%
Health Care and Social Assistance	41,400	41,400	44,400	0	0.0%	-3,000	-6.8%
General Medical and Surgical Hospitals	13,500	13,500	14,000	0	0.0%	-500	-3.6%
Leisure and Hospitality	28,800	28,700	32,600	100	0.4%	-3,800	-11.7%
Arts, Entertainment and Recreation	4,200	4,100	5,700	100	2.4%	-1,500	-26.3%
Food Services and Drinking Places	24,600	24,600	26,900	0	0.0%	-2,300	-8.6%
Other Services	9,800	9,700	10,500	100	1.0%	-700	-6.7%
Total Government	31,100	30,600	33,500	500	1.6%	-2,400	-7.2%
Federal Government	1,900	1,900	2,000	0	0.0%	-100	-5.0%
State Government	4,000	3,900	4,300	100	2.6%	-300	-7.0%
Local Government	25,200	24,800	27,200	400	1.6%	-2,000	-7.4%
Local Government Educational Services	14,700	14,300	15,900	400	2.8%	-1,200	-7.6%

Source: Indiana Dept of Workforce Development, Research and Analysis, Current Employment Statistics

Gary Metropolitan Division Employment Trends

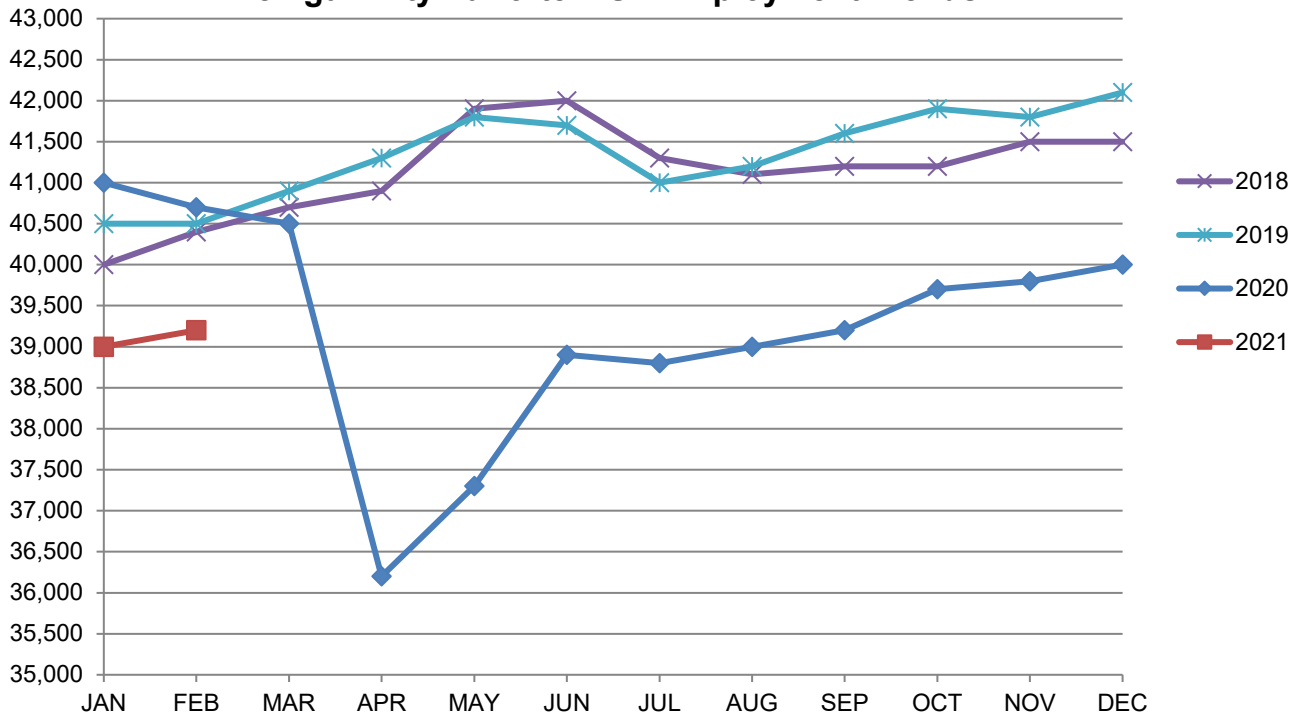


Source: Indiana Department of Workforce Development, Research & Analysis, Current Employment Statistics | Note: Historical data for the most recent 4 years (both seasonally adjusted and not seasonally adjusted) are revised near the beginning of each calendar year, prior to the release of January estimates for statewide data.

Michigan City-LaPorte MSA							
Wage and Salaried Employment	February 2021			# Change	% Change	# Change	% Change
Industry	Feb-21	Jan-21	Feb-20	Jan-21 to Feb-21	Feb-20 to Feb-21		
Total Nonfarm	39,200	39,000	40,700	200	0.5%	-1,500	-3.7%
Total Private	33,100	33,000	34,200	100	0.3%	-1,100	-3.2%
Goods Producing	9,500	9,400	10,000	100	1.1%	-500	-5.0%
Service Providing	29,700	29,600	30,700	100	0.3%	-1,000	-3.3%
Private Service Providing	23,600	23,600	24,200	0	0.0%	-600	-2.5%
Mining, Logging and Construction	1,700	1,700	1,900	0	0.0%	-200	-10.5%
Manufacturing	7,800	7,700	8,100	100	1.3%	-300	-3.7%
Trade, Transportation & Utilities	8,400	8,400	8,000	0	0.0%	400	5.0%
Wholesale Trade	1,600	1,600	1,500	0	0.0%	100	6.7%
Retail Trade	4,900	4,900	4,900	0	0.0%	0	0.0%
Information	200	200	200	0	0.0%	0	0.0%
Financial Activities	1,200	1,200	1,200	0	0.0%	0	0.0%
Professional and Business Services	2,700	2,600	2,700	100	3.9%	0	0.0%
Education and Health Services	5,700	5,700	5,800	0	0.0%	-100	-1.7%
Leisure and Hospitality	4,300	4,400	5,200	-100	-2.3%	-900	-17.3%
Other Services	1,100	1,100	1,100	0	0.0%	0	0.0%
Total Government	6,100	6,000	6,500	100	1.7%	-400	-6.2%
Federal Government	200	200	200	0	0.0%	0	0.0%
State Government	1,900	1,900	2,000	0	0.0%	-100	-5.0%
Local Government	4,000	3,900	4,300	100	2.6%	-300	-7.0%
Local Government Educational Services	2,300	2,200	2,400	100	4.6%	-100	-4.2%

Source: Indiana Dept of Workforce Development, Research and Analysis, Current Employment Statistics

Michigan City-LaPorte MSA Employment Trends



Source: Indiana Department of Workforce Development, Research & Analysis, Current Employment Statistics | Note: Historical data for the most recent 4 years (both seasonally adjusted and not seasonally adjusted) are revised near the beginning of each calendar year, prior to the release of January estimates for statewide data.

Frequently Listed Jobs	
Top 20 job listings by number of openings in Region 1 in the past month	
Rank	Occupations
1	Nursing Assistants
2	Licensed Practical and Licensed Vocational Nurses
3	Registered Nurses
4	Production Workers, All Other
5	Air Traffic Controllers
6	Managers, All Other
7	Janitors and Cleaners, Except Maids and Housekeeping Cleaners
8	Grounds Maintenance Workers, All Other
9	Heavy and Tractor-Trailer Truck Drivers
10	Maintenance Workers, Machinery
11	Counter Attendants, Cafeteria, Food Concession, and Coffee Shop
12	Healthcare Practitioners and Technical Workers, All Other
13	Laborers and Freight, Stock, and Material Movers, Hand
14	Engineers, All Other
15	Accountants
16	Nursery Workers
17	Computer Systems Engineers/Architects
18	Retail Salespersons
19	Therapists, All Other
20	Customer Service Representatives

Source: Indiana Workforce Development, Indiana Career Connect

Applicant Pool	
Top 20 occupations desired by applicants on their resumes in the past 12 months	
Occupations	# of applicants
Production Workers, All Other	3,933
Helpers--Production Workers	3,885
Laborers and Freight, Stock, and Material Movers, Hand	3,007
Assemblers and Fabricators, All Other	2,901
Cashiers	2,489
Customer Service Representatives	2,187
Stock Clerks and Order Fillers	1,491
Office Clerks, General	1,439
Managers, All Other	1,253
Retail Salespersons	1,213
Construction Laborers	1,206
Office and Administrative Support Workers, All Other	1,189
Receptionists and Information Clerks	1,121
Industrial Truck and Tractor Operators	1,062
Nursing Assistants	1,058
Janitors and Cleaners, Except Maids and Housekeeping Cleaners	1,050
Welders, Cutters, Solderers, and Brazers	1,047
Maintenance and Repair Workers, General	1,009
Executive Secretaries and Executive Administrative Assistants	973
Packers and Packagers, Hand	949

Source: Indiana Workforce Development, Indiana Career Connect

Consumer Price Index (CPI-U Change), Unadjusted Percent Change to February 2021 from						
CPI Item	Feb-20	Jan-21	Feb-20	Jan-21	Feb-20	Jan-21
	Chicago-Naperville-Elgin, IN-IL-WI		U.S. City		Midwest Region*	
All Items	1.2%	0.6%	1.7%	0.5%	1.7%	0.8%
Food & Beverages	5.5%	0.6%	3.5%	0.2%	2.8%	0.1%
Housing	1.5%	0.2%	1.8%	0.3%	1.9%	0.5%
Apparel	-4.7%	1.5%	-3.6%	1.9%	-2.1%	2.4%
Transportation	-1.3%	1.8%	0.6%	1.7%	0.6%	2.3%
Medical Care	0.1%	-0.6%	2.0%	0.4%	2.5%	0.5%
Recreation	2.6%	3.0%	0.8%	0.7%	1.5%	1.2%
Education & Communication	-0.8%	0.1%	1.7%	0.1%	1.5%	0.2%
Other Goods & Services	-0.9%	-0.5%	2.1%	0.4%	0.6%	0.1%

*Midwest region = Midwest Urban Average. Midwest Region includes Illinois, Indiana, Iowa, Kansas, Michigan, Minnesota, Missouri, Nebraska, North Dakota, Ohio, South Dakota and Wisconsin | Source: U.S. Bureau of Labor Statistics

Number of involuntary part-time workers in February 2021 down from record highs

The number of people at work part time for economic reasons, also called involuntary part-time workers, totaled 6.1 million in February 2021. This was down from 10.9 million in April 2020 but is 1.7 million higher than in February 2020. These workers would have preferred full-time employment but were working part time because their hours had been reduced due to slack work or they were unable to find full-time jobs.

Number of people employed part time for economic reasons, January 2000 to February 2021



Shaded areas represent recessions as determined by the National Bureau of Economic Research. When this chart was published, the NBER had not yet determined an endpoint for the recession that began in February 2020. Source: U.S. Bureau of Labor Statistics.

The share of the employed who were involuntary part-time workers increased sharply following the onset of the COVID-19 pandemic, as businesses around the country cut back operations in response to the pandemic and efforts to contain the spread of the virus. The share was 2.8 percent in February 2020 but rose to 8.2 percent in April 2020. By February 2021, this share had fallen to 4.1 percent. The rapid rise of involuntary part-time work and subsequent decline occurred almost entirely among those whose hours were cut due to slack work or business conditions; the changes among those who could only find part-time jobs were comparatively small. These data are from the Current Population Survey and are seasonally adjusted. For more information, see “The Employment Situation — February 2021.” We also have more charts on employment and unemployment. Also see Impact of the coronavirus (COVID-19) pandemic on The Employment Situation for February 2021. People at work part time for economic reasons include those who usually work full time (35 hours or more per week) and those who usually work part time. Bureau of Labor Statistics, U.S. Department of Labor, The Economics Daily, Number of involuntary part-time workers in February 2021 down from record highs at <https://www.bls.gov/opub/ed/2021/number-of-involuntary-part-time-workers-in-february-2021-down-from-record-highs.htm> (visited March 31, 2021).

County Unemployment Rates February 2021



INDIANA
DEPARTMENT OF
WORKFORCE
DEVELOPMENT

Questions?

Please contact the DWD
Research and Analysis
Regional Labor Analyst
listed below:

Kathy Jaworski

Regional Labor Analyst
Research and Analysis

[Indiana Department of
Workforce Development](https://www.in.gov/dwd/)

219-841-6347

kjaworski@dwd.in.gov

