



HOOSIERS BY THE NUMBERS

Your premier source for labor market information for Indiana.



INDIANA
DEPARTMENT OF
WORKFORCE
DEVELOPMENT

LABOR MARKET REVIEW



November 2020 Labor Market Review

Reported by: Kathy Jaworski

Regional Workforce Analyst

[Email Kathy](#)

kjaworski@dwd.in.gov

Tel: 219-841-6347



INDIANA
DEPARTMENT OF
WORKFORCE
DEVELOPMENT

LABOR MARKET REVIEW

Economic Growth Region 1

Statistical Data Report for November 2020, Released January 2021

State Employment and Unemployment

Unemployment rates were lower in November in 25 states and the District of Columbia, higher in 7 states, and stable in 18 states, the U.S. Bureau of Labor Statistics reported. Forty-eight states and the District had jobless rate increases from a year earlier and two states had little change. The national unemployment rate edged down by 0.2 percentage point over the month to 6.7 percent but was 3.2 points higher than in November 2019. Nonfarm payroll employment increased in 17 states, decreased in 3 states, and was essentially unchanged in 30 states and the District of Columbia in November 2020.



Economic Growth Region (EGR) 1

Jasper, Lake, LaPorte, Newton, Porter, Pulaski and Starke Counties

November 2020 Labor Force Estimates (not seasonally adjusted)						
Area	Labor Force	Employed	Unemployed	Nov-20	Oct-20	Nov-19
U.S.	160,468,000	150,203,000	10,264,000	6.4%	6.6%	3.3%
IN	3,325,870	3,163,343	162,527	4.9%	5.3%	3.1%
Gary Metro Div	336,539	314,336	22,203	6.6%	6.9%	4.1%
MichCity-LaPorte MSA	47,874	44,586	3,288	6.9%	7.0%	3.7%
EGR 1	399,880	373,592	26,288	6.6%	6.9%	4.0%
Lake Co.	228,667	211,793	16,874	7.4%	7.8%	4.4%
Porter Co.	85,187	80,798	4,389	5.2%	5.4%	3.4%
LaPorte Co.	47,874	44,586	3,288	6.9%	7.0%	3.7%
Newton Co.	6,784	6,515	269	4.0%	4.0%	3.4%
Jasper Co.	15,901	15,230	671	4.2%	4.5%	3.2%
Starke Co.	9,319	8,766	553	5.9%	6.0%	3.9%
Pulaski Co.	6,148	5,904	244	4.0%	4.3%	3.1%
East Chicago	10,115	8,932	1,183	11.7%	13.0%	5.8%
Hammond	34,289	31,392	2,897	8.4%	8.7%	4.8%
Munster	11,411	10,936	475	4.2%	4.9%	3.1%
Dyer	8,575	8,220	355	4.1%	4.2%	3.3%
Schererville	15,750	14,974	776	4.9%	4.9%	3.2%
Crown Point	15,148	14,433	715	4.7%	5.2%	3.3%
Griffith	8,712	8,132	580	6.7%	7.0%	4.2%
Highland	12,157	11,556	601	4.9%	5.2%	3.8%
Gary	28,224	23,975	4,249	15.1%	15.7%	6.7%
Merrillville	16,954	15,550	1,404	8.3%	9.0%	4.7%
Hobart	14,545	13,591	954	6.6%	6.5%	4.8%
Lake Station	4,894	4,419	475	9.7%	9.9%	5.6%
Portage	17,830	16,651	1,179	6.6%	6.9%	3.9%
Chesterton	6,937	6,536	401	5.8%	5.7%	3.2%
Valparaiso	16,448	15,667	781	4.7%	5.2%	3.2%
Michigan City	13,054	11,770	1,284	9.8%	10.2%	4.2%
LaPorte	9,555	8,921	634	6.6%	7.2%	3.9%

Unemployment Rates by State (seasonally adjusted): November 2020

U.S. - 6.7%

Illinois - 6.9%

Indiana - 5%

Kentucky - 5.6%

Michigan - 6.9%

Ohio - 5.7%

Source: U.S. Department of Labor, Bureau of Labor Statistics

Unemployment Rank by County (of 92 counties): November 2020

#1 - Lake (7.4%)

#3 - LaPorte (6.9%)

#7 - Starke (5.9%)

#14 - Porter (5.2%)

#44 - Jasper (4.2%)

#53 - Newton (4%)

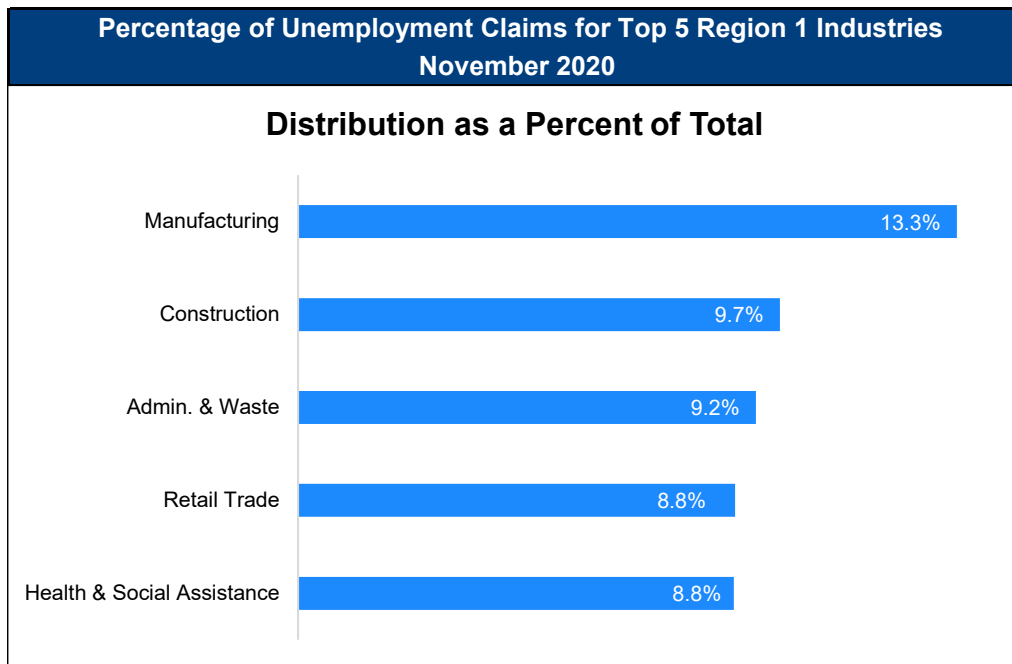
#54 - Pulaski (4%)

Source: Indiana Department of Workforce Development, Research and Development, Local Area Unemployment Statistics

Labor Market Review EGR 1

Statewide Average Weekly Hours & Earnings by Industry for November 2020			
Industry	Avg. Earnings per hr	Avg. # of hours worked per week	Avg. Earnings per week
Construction	\$27.37	39.9	\$1,092.06
Manufacturing	\$21.20	41.7	\$884.04
Durable Goods	\$22.45	42.1	\$945.15
Fabricated Metal Product Manufacturing	\$20.41	39.9	\$814.36
Transportation Equipment Manufacturing	\$23.17	41.2	\$954.60
Non-Durable Goods	\$18.23	40.9	\$745.61
Retail Trade	\$16.78	30.5	\$511.79
Financial Activities	\$26.61	36.2	\$963.28
Health Care and Social Assistance	\$25.47	33.7	\$858.34
Accommodation and Food Services	\$12.34	23.4	\$288.76
Food Services and Drinking Places	\$12.31	22.7	\$279.44

Source: Indiana Department of Workforce Development, Current Employment Statistics



Source: Indiana Department of Workforce Development, Research and Analysis

WARN Notices

WARN Notices for Region 1 for November 2020				
Company	City	County	# affected	Notice Date

There are no WARN Notices for November 2020 for Region 1.

Significant WARN Notices for nearby locations				
Company	City	County	# Affected	Notice Date
Manchester Tank & Equipment	Elkhart	Elkhart	128	11/10/2020
Wabash Valley	Silver Lake	Kosciusko	80	11/11/2020
Various companies/permanent layoffs	Chicago, IL	Cook	156	Nov. 2020

Source: Indiana Department of Workforce Development, WARN Notices | For information on WARN Act requirements, you may go to the U.S. Department of Labor Employment Training Administration Fact Sheet: <https://www.doleta.gov/programs/factsheet/warn.htm>

Unemployment Claims: November 2020

Region 1

Initial Claims

11/07/20 - 2,317
11/14/20 - 2,901
11/21/20 - 3,584
11/28/20 - 3,803

Continued Claims

11/07/20 - 8,008
11/14/20 - 7,665
11/21/20 - 6,671
11/28/20 - 6,535

Total Claims

11/07/20 - 10,325
11/14/20 - 10,566
11/21/20 - 10,255
11/28/20 - 10,338

State of Indiana

Initial Claims

11/07/20 - 14,111
11/14/20 - 15,422
11/21/20 - 18,829
11/28/20 - 20,575

Continued Claims

11/07/20 - 81,938
11/14/20 - 84,966
11/21/20 - 78,674
11/28/20 - 84,790

Total Claims

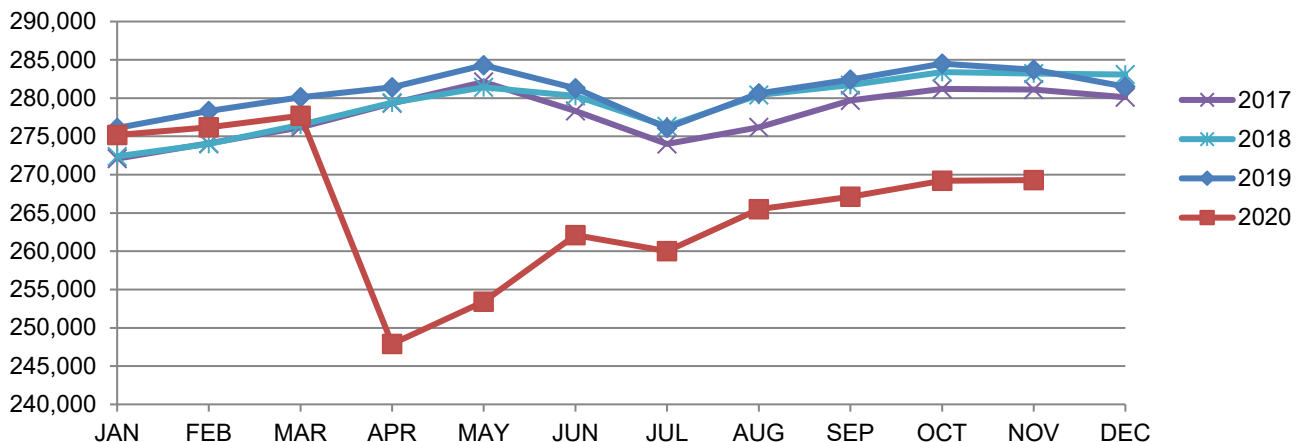
11/07/20 - 96,049
11/14/20 - 100,388
11/21/20 - 97,503
11/28/20 - 105,365

(D) Indicates one or more counties are excluded due to non-disclosure issues | Source: Indiana Department of Workforce Development, Research and Analysis

Gary Metropolitan Division							
Wage and Salaried Employment	November 2020			# Change	% Change	# Change	% Change
Industry	Nov-20	Oct-20	Nov-19	Oct-20 to Nov-20		Nov-19 to Nov-20	
Total Nonfarm	269,300	269,200	283,700	100	0.0%	-14,400	-5.1%
Total Private	237,200	237,200	249,300	0	0.0%	-12,100	-4.9%
Goods Producing	52,100	51,700	54,500	400	0.8%	-2,400	-4.4%
Service Providing	217,200	217,500	229,200	-300	-0.1%	-12,000	-5.2%
Private Service Providing	185,100	185,500	194,800	-400	-0.2%	-9,700	-5.0%
Mining and Logging	200	200	200	0	0.0%	0	0.0%
Mining, Logging and Construction	18,200	17,800	18,700	400	2.3%	-500	-2.7%
Construction	18,000	17,600	18,500	400	2.3%	-500	-2.7%
Manufacturing	33,900	33,900	35,800	0	0.0%	-1,900	-5.3%
Durable Goods	25,900	25,900	27,200	0	0.0%	-1,300	-4.8%
Trade, Transportation and Utilities	57,000	56,600	59,200	400	0.7%	-2,200	-3.7%
Wholesale Trade	9,000	9,100	9,300	-100	-1.1%	-300	-3.2%
Retail Trade	31,300	31,000	33,700	300	1.0%	-2,400	-7.1%
General Merchandise Stores	7,400	7,000	7,400	400	5.7%	0	0.0%
Other Gen Merch Stores	4,800	4,600	4,600	200	4.4%	200	4.4%
Transportation, Warehousing and Utilities	16,700	16,500	16,200	200	1.2%	500	3.1%
Information	1,800	1,800	1,900	0	0.0%	-100	-5.3%
Financial Activities	8,600	8,600	8,800	0	0.0%	-200	-2.3%
Professional and Business Services	24,800	24,700	25,000	100	0.4%	-200	-0.8%
Employment Services	4,000	4,200	4,100	-200	-4.8%	-100	-2.4%
Education and Health Services	48,000	48,300	52,500	-300	-0.6%	-4,500	-8.6%
Educational Services	6,900	6,900	7,900	0	0.0%	-1,000	-12.7%
Health Care and Social Assistance	41,100	41,400	44,600	-300	-0.7%	-3,500	-7.9%
General Medical and Surgical Hospitals	13,400	13,400	13,700	0	0.0%	-300	-2.2%
Leisure and Hospitality	31,100	31,700	32,600	-600	-1.9%	-1,500	-4.6%
Arts, Entertainment and Recreation	5,700	6,100	5,800	-400	-6.6%	-100	-1.7%
Food Services and Drinking Places	25,400	25,600	26,800	-200	-0.8%	-1,400	-5.2%
Other Services	13,800	13,800	14,800	0	0.0%	-1,000	-6.8%
Total Government	32,100	32,000	34,400	100	0.3%	-2,300	-6.7%
Federal Government	1,900	2,100	2,000	-200	-9.5%	-100	-5.0%
State Government	4,500	4,500	4,800	0	0.0%	-300	-6.3%
Local Government	25,700	25,400	27,600	300	1.2%	-1,900	-6.9%
Local Government Educational Services	14,800	14,900	16,100	-100	-0.7%	-1,300	-8.1%

Source: Indiana Dept of Workforce Development, Research and Analysis, Current Employment Statistics

Gary Metropolitan Division Employment Trends

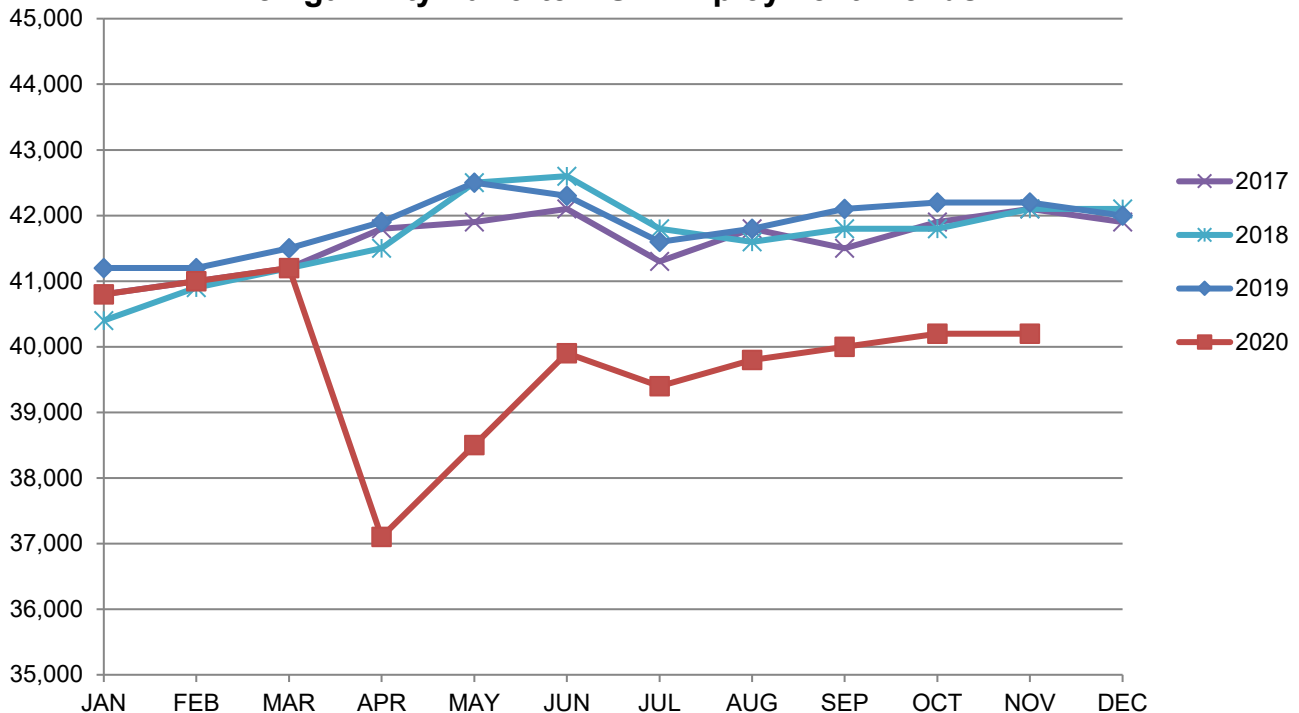


Source: Indiana Department of Workforce Development, Research & Analysis, Current Employment Statistics | Note: Historical data for the most recent 4 years (both seasonally adjusted and not seasonally adjusted) are revised near the beginning of each calendar year, prior to the release of January estimates for statewide data.

Michigan City-LaPorte MSA							
Wage and Salaried Employment	November 2020			# Change	% Change	# Change	% Change
Industry	Nov-20	Oct-20	Nov-19	Oct-20 to Nov-20		Nov-19 to Nov-20	
Total Nonfarm	40,200	40,200	42,200	0	0.0%	-2,000	-4.7%
Total Private	33,800	33,800	35,200	0	0.0%	-1,400	-4.0%
Goods Producing	9,800	9,900	10,300	-100	-1.0%	-500	-4.9%
Service Providing	30,400	30,300	31,900	100	0.3%	-1,500	-4.7%
Private Service Providing	24,000	23,900	24,900	100	0.4%	-900	-3.6%
Mining, Logging and Construction	2,000	2,100	2,100	-100	-4.8%	-100	-4.8%
Manufacturing	7,800	7,800	8,200	0	0.0%	-400	-4.9%
Trade, Transportation & Utilities	8,500	8,400	8,100	100	1.2%	400	4.9%
Wholesale Trade	1,400	1,400	1,400	0	0.0%	0	0.0%
Retail Trade	4,900	4,800	5,100	100	2.1%	-200	-3.9%
Information	200	200	200	0	0.0%	0	0.0%
Financial Activities	1,200	1,200	1,300	0	0.0%	-100	-7.7%
Professional and Business Services	2,700	2,700	2,600	0	0.0%	100	3.9%
Education and Health Services	5,400	5,400	5,800	0	0.0%	-400	-6.9%
Leisure and Hospitality	4,700	4,700	5,400	0	0.0%	-700	-13.0%
Other Services	1,300	1,300	1,500	0	0.0%	-200	-13.3%
Total Government	6,400	6,400	7,000	0	0.0%	-600	-8.6%
Federal Government	200	200	200	0	0.0%	0	0.0%
State Government	2,400	2,400	2,400	0	0.0%	0	0.0%
Local Government	3,800	3,800	4,400	0	0.0%	-600	-13.6%
Local Government Educational Services	2,000	2,000	2,500	0	0.0%	-500	-20.0%

Source: Indiana Dept of Workforce Development, Research and Analysis, Current Employment Statistics

Michigan City-LaPorte MSA Employment Trends



Source: Indiana Department of Workforce Development, Research & Analysis, Current Employment Statistics | Note: Historical data for the most recent 4 years (both seasonally adjusted and not seasonally adjusted) are revised near the beginning of each calendar year, prior to the release of January estimates for statewide data.

Frequently Listed Jobs	
Top 20 job listings by number of openings in Region 1 in the past month	
Rank	Occupations
1	Registered Nurses
2	Correctional Officers and Jailers
3	Licensed Practical and Licensed Vocational Nurses
4	Nursing Assistants
5	Production Workers, All Other
6	Janitors and Cleaners, Except Maids and Housekeeping Cleaners
7	Combined Food Preparation and Serving Workers, Including Fast Food
8	Packaging and Filling Machine Operators and Tenders
9	Tellers
10	First-Line Supervisors of Food Preparation and Serving Workers
11	Helpers--Production Workers
12	Heavy and Tractor-Trailer Truck Drivers
13	Laborers and Freight, Stock, and Material Movers, Hand
14	Team Assemblers
15	Continuous Mining Machine Operators
16	Therapists, All Other
17	Customer Service Representatives
18	Bus Drivers, School or Special Client
19	Managers, All Other
20	Driver/Sales Workers

Source: Indiana Workforce Development, Indiana Career Connect

Applicant Pool	
Top 20 occupations desired by applicants on their resumes in the past 12 months	
Occupations	# of applicants
Production Workers, All Other	3,762
Helpers--Production Workers	3,621
Laborers and Freight, Stock, and Material Movers, Hand	2,846
Assemblers and Fabricators, All Other	2,763
Cashiers	2,335
Customer Service Representatives	2,098
Office Clerks, General	1,415
Stock Clerks and Order Fillers	1,401
Managers, All Other	1,216
Office and Administrative Support Workers, All Other	1,153
Retail Salespersons	1,144
Construction Laborers	1,121
Receptionists and Information Clerks	1,073
Industrial Truck and Tractor Operators	1,013
Janitors and Cleaners, Except Maids and Housekeeping Cleaners	980
Maintenance and Repair Workers, General	978
Nursing Assistants	971
Welders, Cutters, Solderers, and Brazers	970
Executive Secretaries and Executive Administrative Assistants	935
Packers and Packagers, Hand	904

Source: Indiana Workforce Development, Indiana Career Connect

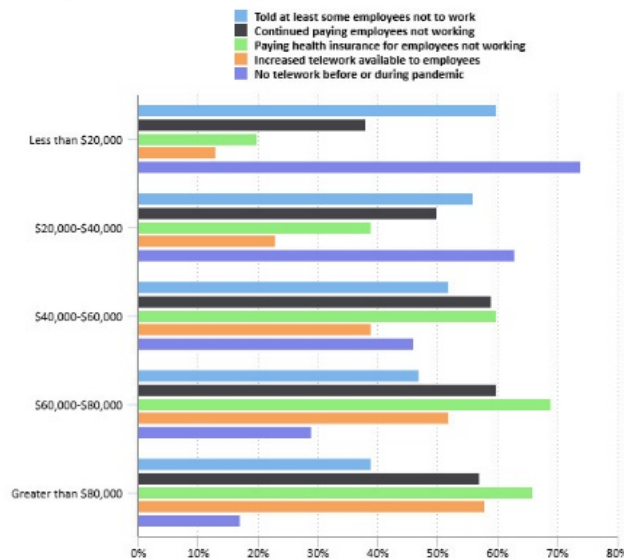
Consumer Price Index (CPI-U Change), Unadjusted Percent Change to November 2020 from						
CPI Item	Nov-19	Oct-20	Nov-19	Oct-20	Nov-19	Oct-20
	Chicago-Naperville-Elgin, IN-IL-WI		U.S. City		Midwest Region*	
All Items	0.8%	-0.4%	1.2%	-0.1%	1.0%	-0.2%
Food & Beverages	4.8%	-0.5%	3.7%	-0.2%	2.7%	-0.4%
Housing	2.1%	0.2%	2.0%	0.1%	2.2%	0.2%
Apparel	-6.7%	-3.2%	-5.2%	-2.2%	-6.4%	-3.1%
Transportation	-4.9%	-1.4%	-3.3%	-0.1%	-2.7%	-0.6%
Medical Care	1.7%	-0.5%	2.4%	-0.2%	2.3%	-0.2%
Recreation	-1.2%	-0.2%	1.3%	0.4%	1.1%	0.4%
Education & Communication	-0.6%	-0.4%	1.9%	0.0%	1.4%	-0.5%
Other Goods & Services	-0.1%	-0.2%	1.7%	0.1%	1.0%	0.3%

*Midwest region = Midwest Urban Average. Midwest Region includes Illinois, Indiana, Iowa, Kansas, Michigan, Minnesota, Missouri, Nebraska, North Dakota, Ohio, South Dakota and Wisconsin | Source: U.S. Bureau of Labor Statistics

60 percent of businesses with average pay less than \$20k told some staff not to work due to COVID-19

Many U.S. businesses have changed their operations and employment because of the COVID-19 pandemic. Since January 1, 2020, 60 percent of establishments in which workers were paid an average annual wage of less than \$20,000 in 2019 told at least some employees not to work. This compared with 39 percent of establishments paying an average wage greater than \$80,000. Among establishments that told at least some employees not to work, 57 percent of those paying greater than \$80,000 continued paying at least some workers that they told not to work. This compared with 38 percent for establishments in which workers were paid an average wage less than \$20,000.

Percentage of establishments making selected business decisions in response to the COVID-19 pandemic



Source: U.S. Bureau of Labor Statistics.

Establishments in which workers were paid more than \$80,000, on average, were more than three times as likely as those paying less than \$20,000 to have paid health insurance premiums for employees told not to work. Establishments paying more than \$80,000 were more than four times as likely as those paying less than \$20,000 to report increasing telework opportunities for workers. Telework was not available before or during the pandemic in 74 percent of establishments that paid workers less than \$20,000, on average. This compared with 17 percent of establishments in which workers were paid more than \$80,000. These data are from the Business Response Survey to the Coronavirus Pandemic and are research estimates. This is a new survey of business establishments conducted between July and September 2020 to ask questions on business experiences and responses to the COVID-19 pandemic. The survey received responses from over 150,000 establishments for seven different questions. For more information, see "2020 Results of the Business Response Survey." Also see charts and tables of the latest Business Response Survey data. Bureau of Labor Statistics, U.S. Department of Labor, The Economics Daily, 60 percent of businesses with average pay less than \$20k told some staff not to work due to COVID-19 at <https://www.bls.gov/opub/ted/2020/60-percent-of-businesses-with-average-pay-less-than-20k-told-some-staff-not-to-work-due-to-covid-19.htm> (visited December 16, 2020).

County Unemployment Rates November 2020



INDIANA
DEPARTMENT OF
WORKFORCE
DEVELOPMENT

Questions?

Please contact the DWD
Research and Analysis
Regional Labor Analyst
listed below:

Kathy Jaworski

Regional Labor Analyst
Research and Analysis

[Indiana Department of
Workforce Development](http://Indiana Department of Workforce Development)

219-841-6347

kjaworski@dwd.in.gov

