

07/19/2019

Indiana's Employment and Labor Force Estimates

June 2019

INDIANA
DEPARTMENT OF
WORKFORCE
DEVELOPMENT

Key Points: June 2019

Unemployment Rate

- Indiana = 3.5%
- U.S. = 3.7%

Indiana's rate is unchanged over the year from June 2018.

Indiana's Labor Force

- Over the month Labor Force decreased 10,126 due to a decrease in employment of 7,003 and a decrease in unemployment of 3,123.
- Over the year, increased by 10,028.
- Indiana's labor force participation rate fell by 0.2% over the month to 64.8%. This remains above the U.S. labor force participation rate of 62.9%.

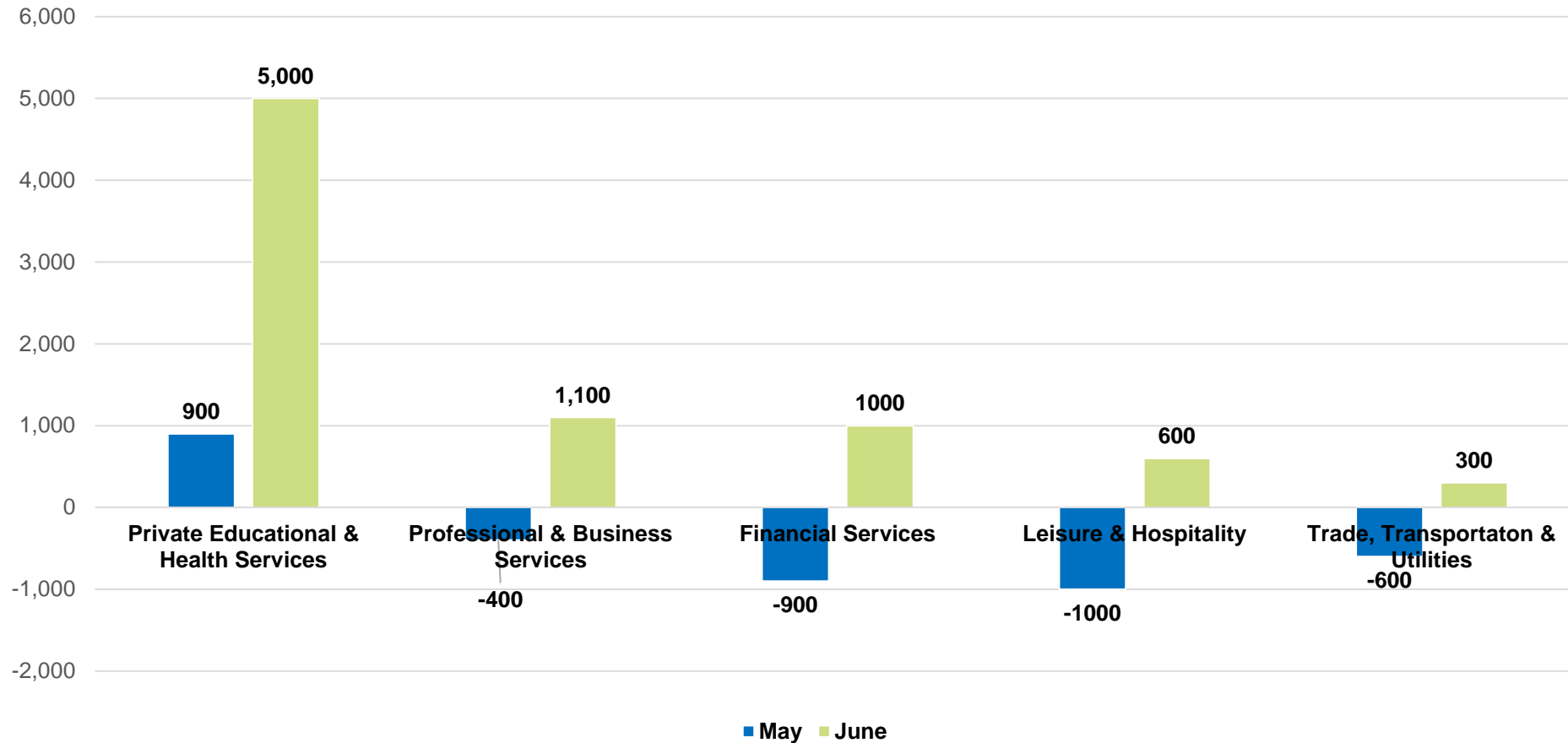
For historical labor force participation data, [visit this link](#).



Key Points: June 2019

Indiana's Private Employment Gains

- increased by 6,800 over the month and had gains of 37,000 over the year.
- June private employment = 2,750,700



Revisions to May 2019 Estimates

Revisions to May 2019 Estimates						
INDUSTRY TITLE	Apr	May Prel	May Rev	Revision	Chg from Apr	Pre Chg from Apr
Total Nonfarm	3172.8	3167.0	3178.2	11.2	5.4	-5.8
Total Private	2743.3	2742.1	2750.7	8.6	7.4	-1.2
Goods Producing	699.0	700.1	698.2	-1.9	-0.8	1.1
Service-Providing	2473.8	2466.9	2480.0	13.1	6.2	-6.9
Private Service Providing	2044.3	2042.0	2052.5	10.5	8.2	-2.3
Construction	149.4	149.5	149.1	-0.4	-0.3	0.1
Manufacturing	543.4	544.3	542.8	-1.5	-0.6	0.9
Trade, Transportation, and Utilities	596.6	596.0	596.6	0.6	0.0	-0.6
Wholesale Trade	121.0	121.1	121.1	0.0	0.1	0.1
Retail Trade	317.3	316.6	316.2	-0.4	-1.1	-0.7
Transportation, Warehousing, and Utilities	158.3	158.3	159.3	1.0	1.0	0.0
Information	28.1	27.8	27.8	0.0	-0.3	-0.3
Financial Activities	137.3	136.4	137.7	1.3	0.4	-0.9
Finance and Insurance	102.5	101.7	102.7	1.0	0.2	-0.8
Real Estate and Rental and Leasing	34.8	34.7	35.0	0.3	0.2	-0.1
Professional and Business Services	349.8	349.4	350.4	1.0	0.6	-0.4
Professional, Scientific, and Technical Services	125.5	126.4	123.7	-2.7	-1.8	0.9
Management of Companies and Enterprises	34.0	33.6	34.0	0.4	0.0	-0.4
Admin & Support & Waste Mgmt & Remediation Services	190.3	189.4	192.7	3.3	2.4	-0.9
Education and Health Services	487.6	488.5	495.4	6.9	7.8	0.9
Educational Services	68.1	68.2	72.0	3.8	3.9	0.1
Health Care and Social Assistance	419.5	420.3	423.4	3.1	3.9	0.8
Leisure and Hospitality	312.6	311.6	312.1	0.5	-0.5	-1.0
Other Services	132.3	132.3	132.5	0.2	0.2	0.0
Government	429.5	424.9	427.5	2.6	-2.0	-4.6



Midwestern Sector Employment Change Compared to Indiana

Percentage growth ranking comparison of Midwestern States and selected industry sectors since the Indiana low point. (May data)

Feb	TNF	Private	Construction	Manufacturing	Professional & Technical Services	Education and Health Services
Illinois	30	31	39	30	27	35
Indiana	18	19	16	4	11	26
Kentucky	25	24	33	8	24	38
Michigan	16	17	11	2	15	47
Minnesota	23	23	9	25	34	25
Ohio	26	26	22	16	38	37
Wisconsin	33	32	21	21	23	41

- Indiana Manufacturing sector growth **exceeded** the other Midwestern states since July 2009 . Three Midwestern States were among the top 10 in manufacturing growth over this time.

Comparing Local Area Unemployment Statistics (LAUS) and Current Employment Statistics (CES)

LAUS (Labor Force by Residence)

This counts people, not jobs, and is...

- An estimate of employment based on where the employee lives, rather than where they work
- Used in calculating the labor force

CES (Employment by Job)

This counts jobs, not people, and is...

- An estimate of employment based on the location of the job regardless of the worker's residence
- Also called nonag wage and salary or nonfarm employment
- Used in Quarterly Census of Employment and Wages (QCEW), Occupational Employment Statistics (OES) and CES data

CES Monthly Jobs Report

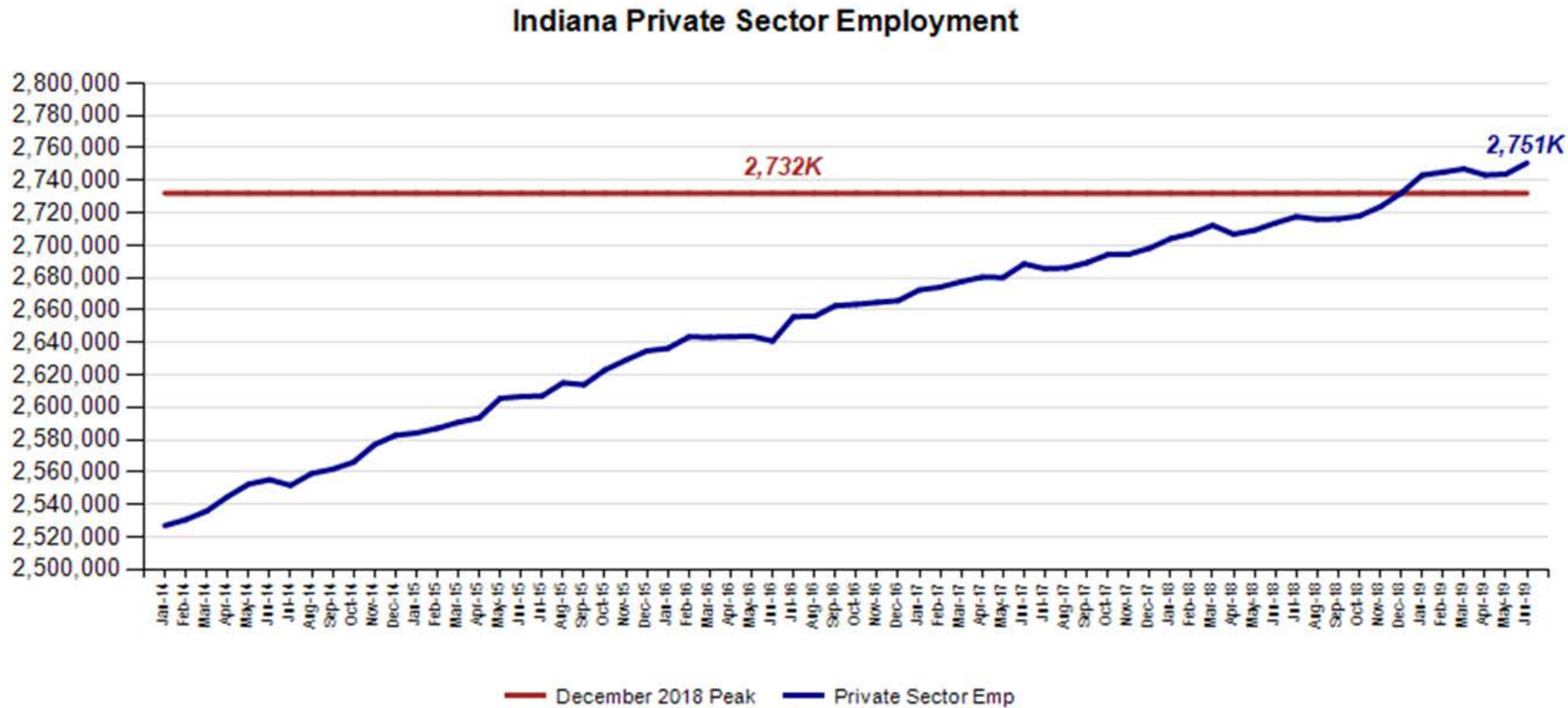
INDIANA
DEPARTMENT OF
WORKFORCE

DEVELOPMENT

MONTHLY
BRIEFING

Indiana Private Sector Employment

June total private employment is 18,600 above the December 2018 peak.



Indiana Private Sector Employment Change

June 2019 increased by 6,800 jobs over the month and is up 37,000 over the year.

IN Employment Change Over the Month, Year-to-Date and Over the Year (seasonally adjusted)

Industry	June 2018	December 2018	May 2019	June 2019	Month Change	Y-to-D Change	Y-to-Y Change
Private Educational & Health Services	474.5	484.4	490.4	495.4	5.0	11.0	20.9
.....Private Educational Services	63.3	66.4	68.9	72.0	3.1	5.6	8.7
.....Health Care & Social Assistance	411.2	418.0	421.5	423.4	1.9	5.4	12.2
Manufacturing	541.9	544.3	543.5	542.8	-0.7	-1.5	0.9
Professional & Business Services	342.4	344.2	349.3	350.4	1.1	6.2	8.0
Financial Activities	139.6	138.4	136.7	137.7	1.0	-0.7	-1.9
Construction	140.8	147.0	149.6	149.1	-0.5	2.1	8.3
Leisure and Hospitality	309.4	308.9	311.5	312.1	0.6	3.2	2.7
Trade, Transportation & Utilities	597.4	597.5	596.3	596.6	0.3	-0.9	-0.8
.....Trade	442.3	440.2	437.9	437.3	-0.6	-2.9	-5.0
.....Transportation, Warehousing & Utilities	155.1	157.3	158.4	159.3	0.9	2.0	4.2
All Other	167.7	167.4	166.6	166.6	0.0	-0.8	-1.1
Total Private	2,713.7	2,732.1	2,743.9	2,750.7	6.8	18.6	37.0
Government (Includes Public Schools & Hospitals)	432.8	429.0	426.6	427.5	0.9	-1.5	-5.3
Total Nonfarm	3,146.5	3,161.1	3,170.5	3,178.2	7.7	17.1	31.7
United States Total Private	126,554.0	127,790.0	128,564.0	128,755.0	191.0	965.0	2,201.0

- Private Educational & Health Services **gained** 5,000 jobs over the month
- Professional & Business Services **gained** 1,100.
- Manufacturing **lost** 700 jobs over the month.

For month to month change, [visit this link.](#)

Source: Current Employment Statistics (seasonally adjusted)

Indiana Private Sector Employment Change From Peak and Trough

June 2019 estimates show Indiana has gained 426,500 jobs since July 2009.

IN Statewide Estimates (seasonally adjusted) -- June 2019

Supersector	Private Empl. Peak Dec 2018	Private Empl. Trough July 2009	May 2019	June 2019	Month to Month Change	Change Since Peak	Change Since Trough	% Month to Month Change
Private Educational & Health Services	484.4	411.1	490.4	495.4	5.0	11.0	84.3	1.0%
.....Private Educational Services	66.4	63.3	68.9	72.0	3.1	5.6	8.7	4.5%
.....Health Care & Social Assistance	418.0	347.8	421.5	423.4	1.9	5.4	75.6	0.5%
Manufacturing	544.3	426.7	543.5	542.8	-0.7	-1.5	116.1	-0.1%
Professional & Business Services	344.2	256.9	349.3	350.4	1.1	6.2	93.5	0.3%
Financial Activities	138.4	130.7	136.7	137.7	1.0	-0.7	7.0	0.7%
Construction	147.0	117.4	149.6	149.1	-0.5	2.1	31.7	-0.3%
Leisure and Hospitality	308.9	276.8	311.5	312.1	0.6	3.2	35.3	0.2%
Trade, Transportation & Utilities	597.5	546.0	596.3	596.6	0.3	-0.9	50.6	0.1%
.....Trade	440.2	421.5	437.9	437.3	-0.6	-2.9	15.8	-0.1%
.....Transportation, Warehousing & Utilities	157.3	124.5	158.4	159.3	0.9	2.0	34.8	0.6%
All Other	167.4	158.6	166.6	166.6	0.0	-0.8	8.0	0.0%
Total Private	2,732.1	2,324.2	2,743.9	2,750.7	6.8	18.6	426.5	0.2%
Government (Includes Public Schools & Hospitals)	429.0	434.5	426.6	427.5	0.9	-1.5	-7.0	0.2%
Total Nonfarm	3,161.1	2,758.7	3,170.5	3,178.2	7.7	17.1	419.5	0.2%
United States Total Private	127,790.0	108,164.0	128,564.0	128,755.0	191.0	965.0	20,591.0	0.1%

- Manufacturing has accounted for 116,100 of this **increase** of jobs.
- Professional & Business Services **increased** by 93,500 jobs over this time frame.

For historical data, [visit this link](#).

Indiana Private Sector Employment Change Compared to U.S.

June 2019 Indiana private sector grew by 0.2% and the U.S. grew by 0.1%.

IN Employment Change Compared to the U.S.

Industry	Indiana Month to Month	U.S. Month to Month	Indiana vs U.S. Change
Private Educational & Health Services	1.0%	0.3%	OVER
.....Private Educational Services	4.5%	0.3%	OVER
.....Health Care & Social Assistance	0.5%	0.2%	OVER
Manufacturing	-0.1%	0.1%	UNDER
Professional & Business Services	0.3%	0.2%	OVER
Financial Activities	0.7%	0.0%	OVER
Construction	-0.3%	0.3%	UNDER
Leisure and Hospitality	0.2%	0.0%	OVER
Trade, Transportation & Utilities	0.1%	0.1%	UNDER
.....Trade	-0.1%	0.0%	UNDER
.....Transportation, Warehousing & Utils	0.6%	0.4%	OVER
All Other	0.0%	0.1%	UNDER
Total Private	0.2%	0.1%	OVER
Government (Includes Public Schools & Hospitals)	0.2%	0.1%	OVER
Total Nonfarm	0.2%	0.1%	OVER

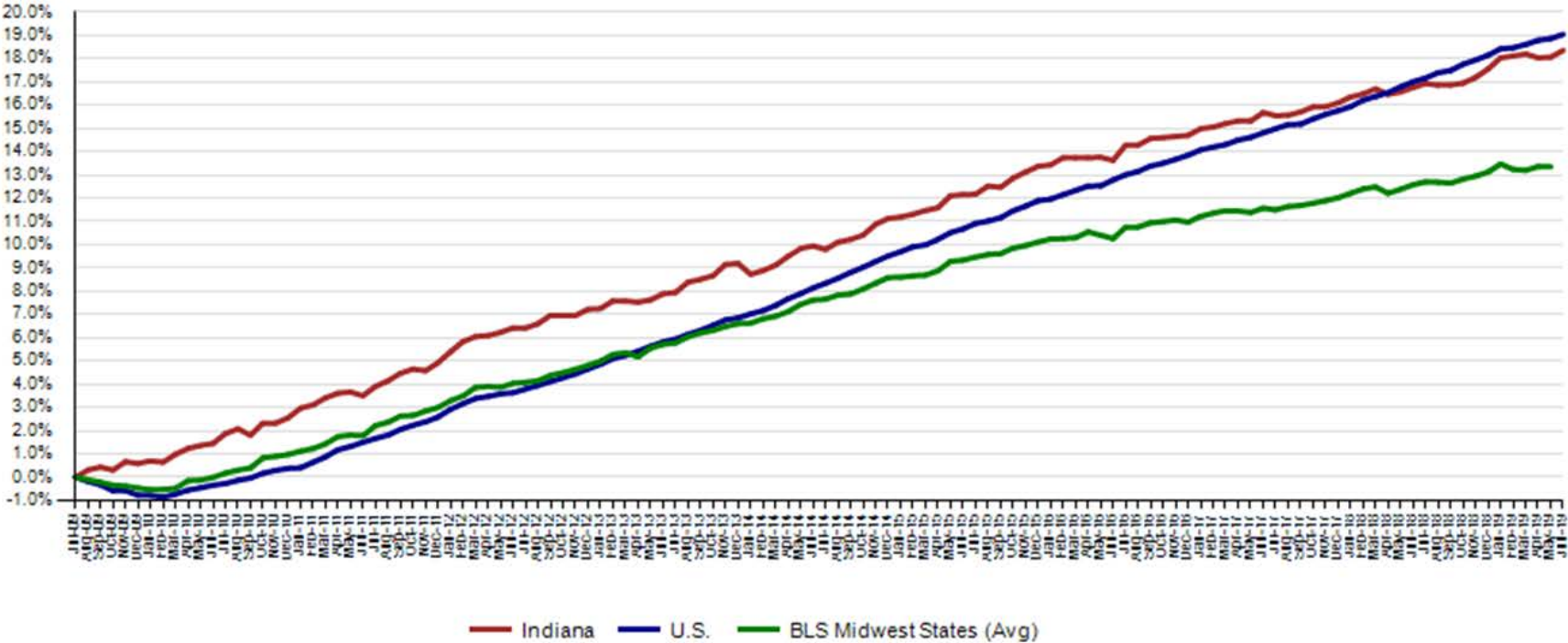
Indiana Year-to-Date	U.S. Year-to-Date	Indiana vs U.S. Change
2.3%	1.3%	OVER
8.4%	1.1%	OVER
1.3%	1.4%	UNDER
-0.3%	0.4%	UNDER
1.8%	1.0%	OVER
-0.5%	0.5%	UNDER
1.4%	1.5%	UNDER
1.0%	1.0%	OVER
-0.2%	0.2%	UNDER
-0.7%	-0.1%	UNDER
1.3%	0.9%	OVER
-0.5%	0.4%	UNDER
0.7%	0.8%	UNDER
-0.3%	0.3%	UNDER
0.5%	0.7%	UNDER

Indiana Year-to-Year	U.S. Year-to-Year	Indiana vs U.S. Change
4.4%	2.5%	OVER
13.7%	1.3%	OVER
3.0%	2.7%	OVER
0.2%	1.3%	UNDER
2.3%	2.3%	OVER
-1.4%	1.0%	UNDER
5.9%	3.1%	OVER
0.9%	2.3%	UNDER
-0.1%	0.8%	UNDER
-1.1%	0.2%	UNDER
2.7%	2.6%	OVER
-0.7%	0.8%	UNDER
1.4%	1.7%	UNDER
-1.2%	0.4%	UNDER
1.0%	1.5%	UNDER

Indiana Private Sector Employment Growth Since July 2009

Indiana is trailing the U.S. in private job growth since July 2009. The U.S. has grown by 19.0% while Indiana has grown by 18.4%.

Private Sector Job Growth Since the Low Point of Employment in Indiana



Avg. Weekly Manufacturing Production Hours

June 2019 average weekly hours for Indiana manufacturing production hours increased by .90 hour to 42.7 hours. National manufacturing increased by 0.3 to 41.8 weekly hours, and Midwest states increased 0.1 to 40.7 hours per week (May 2019 data).

Avg. Weekly Manufacturing Production Hours (non seasonally adjusted)



LAUS Monthly Labor Force Report

INDIANA
DEPARTMENT OF
WORKFORCE

DEVELOPMENT

MONTHLY
BRIEFING

Current Employment Statistics (CES) and Local Area Unemployment Statistics (LAUS)

Point-in-Time Comparison

Month NSA	Labor Force	Employed	Unemployed	IN Rate	Total NonFarm	Total Private	Regular UI Claims
Dec-16	3,289,568	3,161,214	128,354	3.9	3,118,600	2,681,200	24,599
Jun-19	3,412,031	3,298,895	113,136.0	3.3	3,183,700	2,777,100	14,280
Change	122,463	137,681	(15,218)	(0.6)	65,100	95,900	(10,319)

Month SA	Labor Force	Employed	Unemployed	IN Rate	Total NonFarm	Total Private	Regular UI Claims
Dec-16	3,323,233	3,190,341	132,892	4.0	3,092,100	2,665,800	24,599
Jun-19	3,394,817	3,276,914	117,903	3.5	3,178,200	2,750,700	14,280
Change	71,584	86,573	(14,989)	(0.5)	86,100	84,900	(10,319)

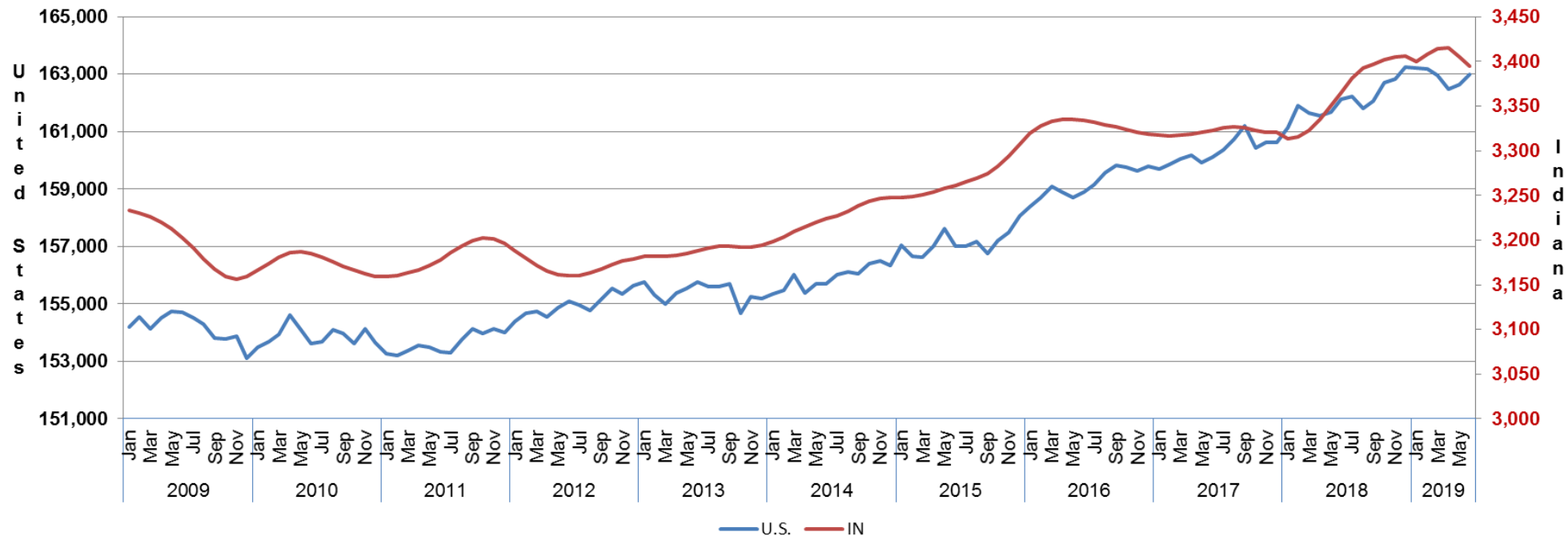


Indiana Labor Force Since July '09 Indiana Trough

June 2019 Indiana Seasonally Adjusted Labor Force stands at 3,394,817

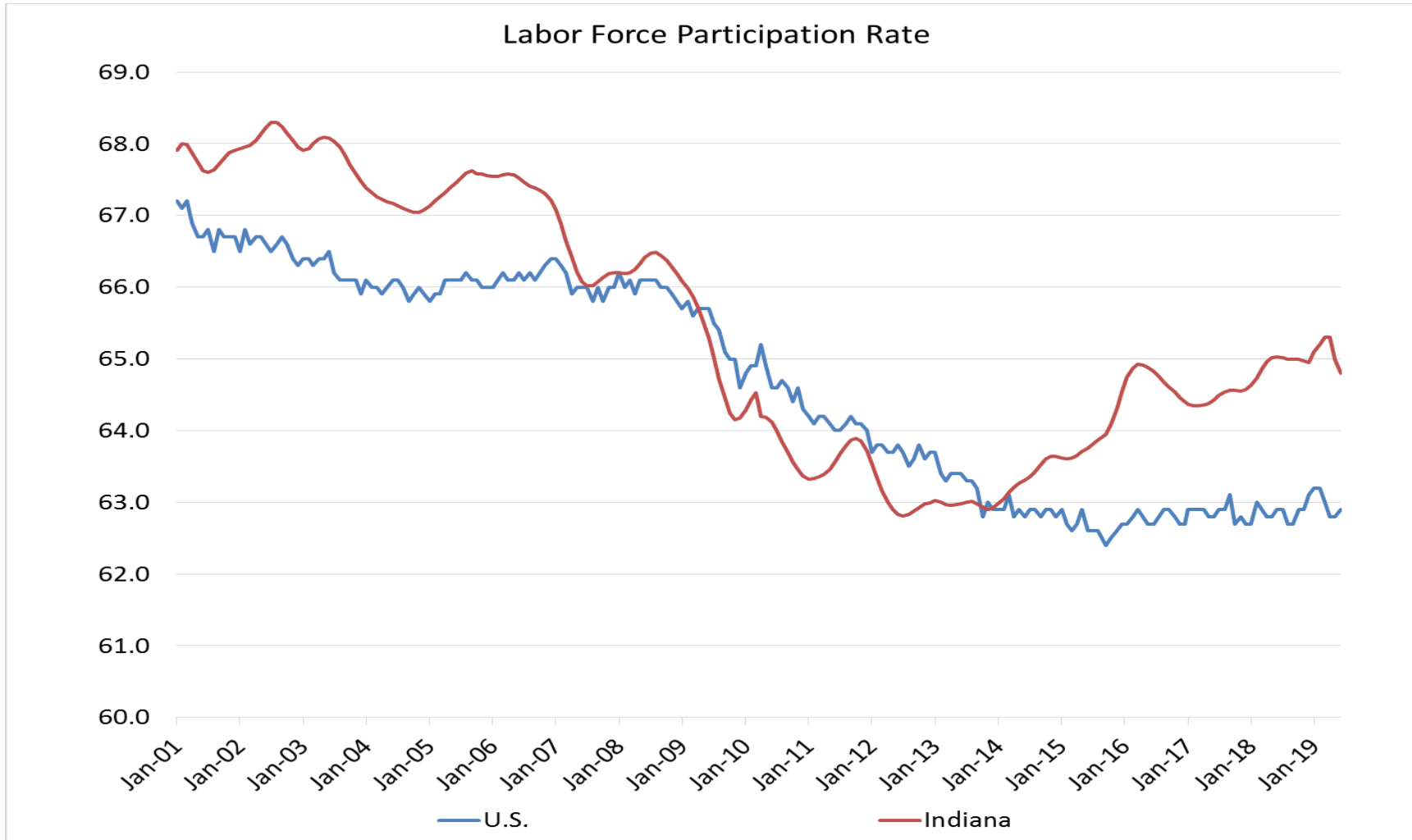
- Employed labor force **decreased** 7,003 over the month
- Unemployment **decreased** by 3,123 over the month

Indiana & U.S. Labor Force, 2009-2019 (in 1000s)



Indiana Labor Force Participation Rate Compared to U.S.

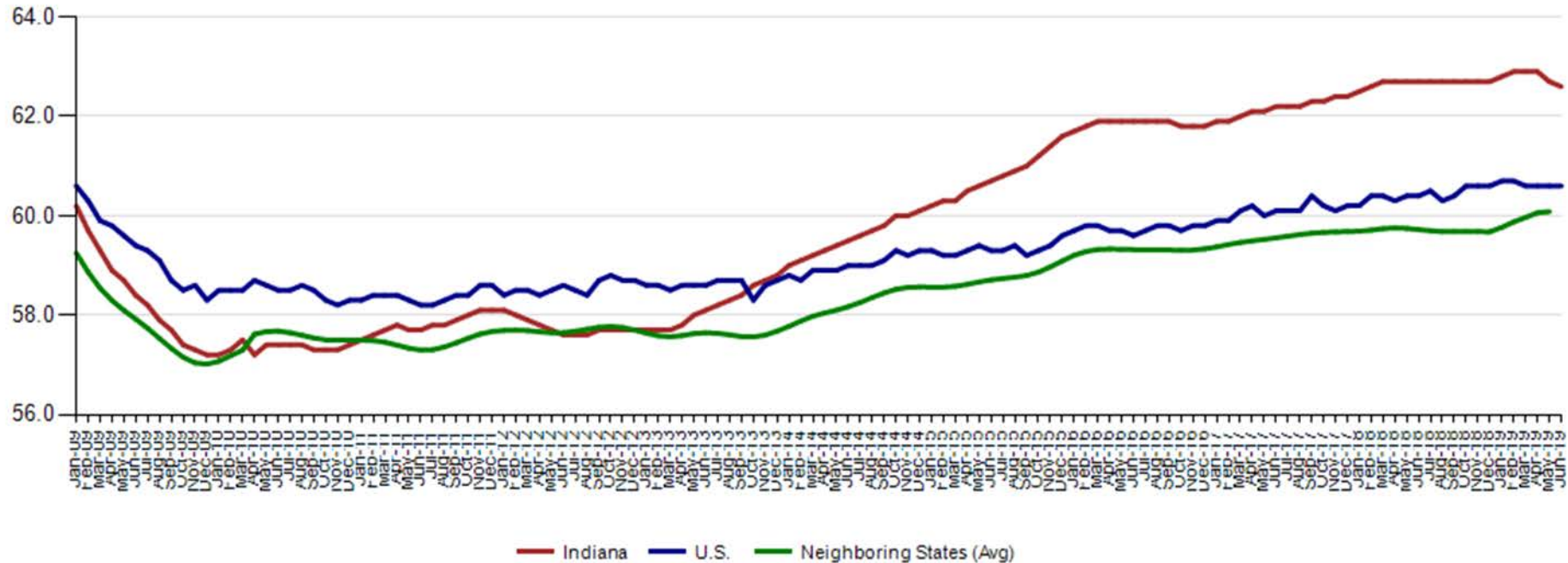
Indiana is at 64.8% compared to U.S. at 62.9%



Employment to Population Ratio (seasonally adjusted)

The Indiana Employment to Population Ratio for June 2019 is 62.6% compared to the U.S. at 60.6%

Employment to Population Ratio (seasonally adjusted)



Alternative Measures of Labor Underutilization

2nd Quarter 2018 through 1st Quarter 2019 Averages

State	U-1	U-2	U-3	U-4	U-5	U-6
Illinois	1.6	2.1	4.3	4.4	5.1	8.1
Indiana	1.1	1.8	3.7	3.9	4.4	6.6
Kentucky	1.4	1.6	4.4	4.7	5.6	8.3
Michigan	1.2	1.8	4	4.3	4.8	7.6
Minnesota	0.8	1.6	3	3.1	3.5	5.5
Ohio	1.4	2.1	4.4	4.7	5.4	8.2
Wisconsin	0.9	1.7	2.9	3	3.5	5.7
United States	1.4	1.8	3.8	4.1	4.7	7.6

The six state measures are based on the same definitions as those published for the U.S.:

- U-1, persons unemployed 15 weeks or longer, as a percent of the civilian labor force;
- U-2, job losers and persons who completed temporary jobs, as a percent of the civilian labor force;
- U-3, total unemployed, as a percent of the civilian labor force (this is the definition used for the official unemployment rate);
- U-4, total unemployed plus discouraged workers, as a percent of the civilian labor force plus discouraged workers;
- U-5, total unemployed, plus discouraged workers, plus all other marginally attached workers, as a percent of the civilian labor force plus all marginally attached workers; and
- U-6, total unemployed, plus all marginally attached workers, plus total employed part time for economic reasons, as a percent of the civilian labor force plus all marginally attached workers.



Midwest Comparison Rates: Seasonally Adjusted Over the Year and Over the Month

	Jun 2018	May-19	Jun 2019	Monthly change	Yearly change
Indiana	3.5%	3.6%	3.5%	-0.1%	0.0%
U.S.	4.0%	3.6%	3.7%	0.1%	-0.3%
Illinois	4.3%	4.4%	4.3%	-0.1%	0.0%
Kentucky	4.4%	4.0%	4.1%	0.1%	-0.3%
Michigan	4.0%	4.2%	4.2%	0.0%	0.2%
Minnesota	2.8%	3.3%	3.3%	0.0%	0.5%
Ohio	4.6%	4.1%	4.0%	-0.1%	-0.6%
Wisconsin	3.1%	2.8%	2.9%	0.1%	-0.2%

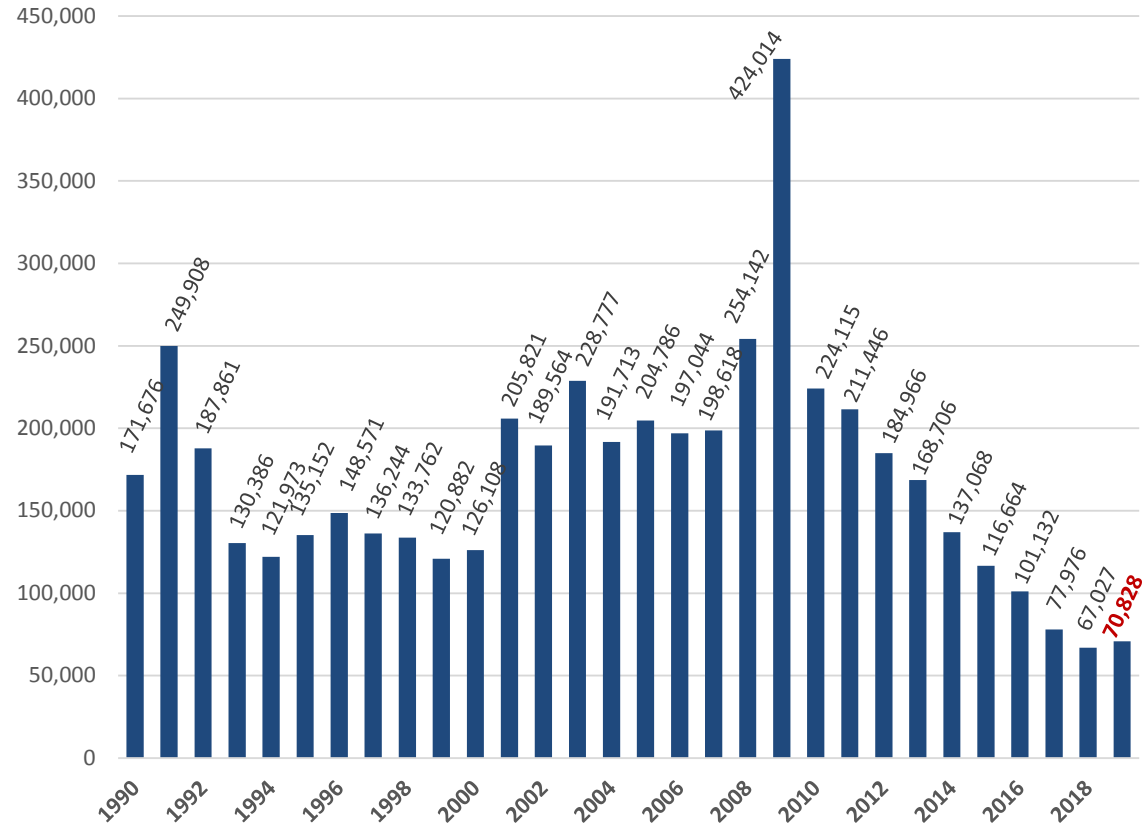
*2018 Benchmark

Confidential & Deliberative



Weekly Initial Claims – Week 27

Total aggregated UI claims for the first 27 weeks of each year as reported to ETA.



Confidential & Deliberative



Regular UI Claims

*Reference Week (12th of the month) Input to LAUS Unemployment Rate Model
Declines over the month - and over the year*

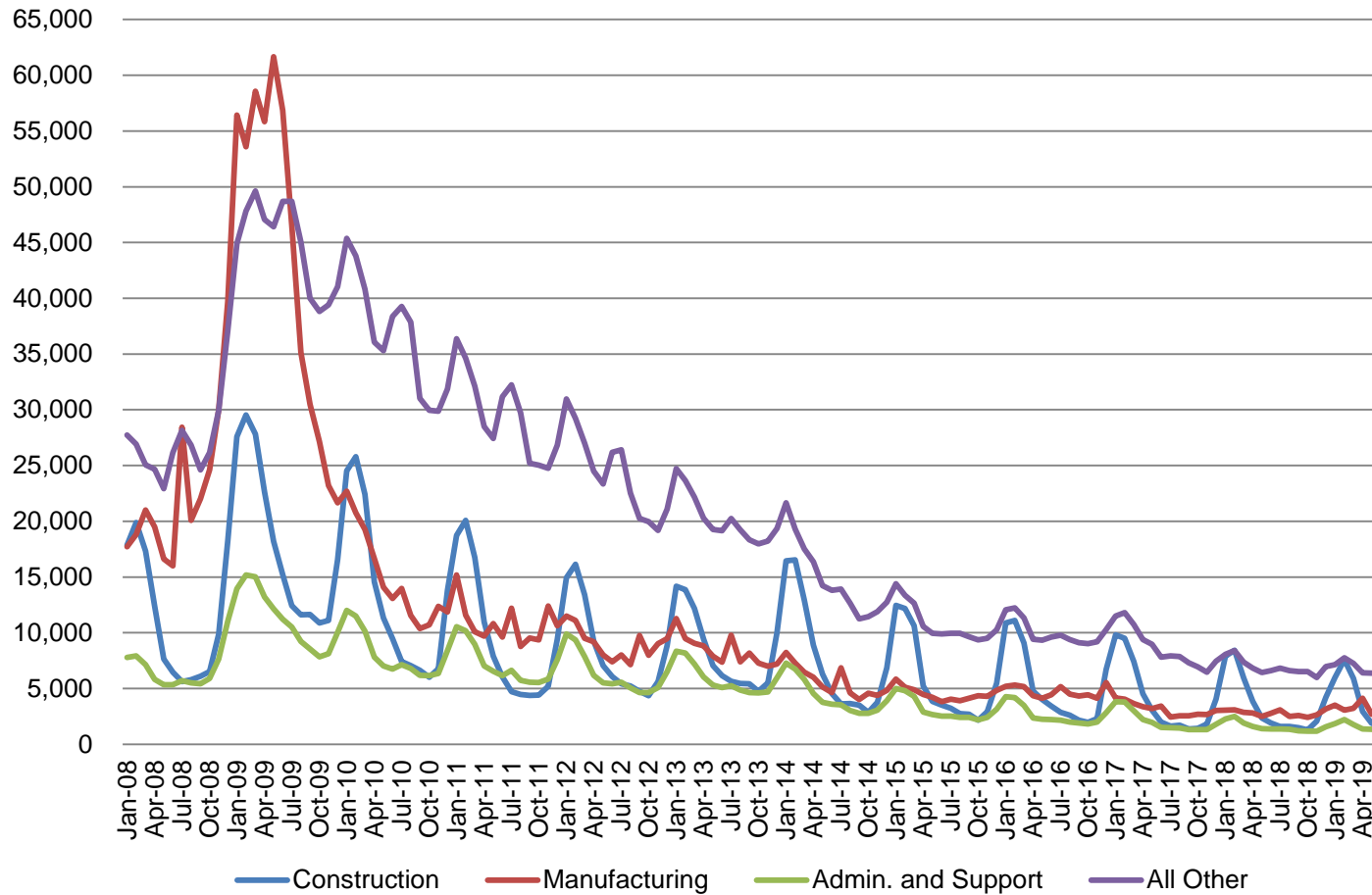
	2009	2013	2014	2015	2016	2017	2018	2019	OTM Change	OTY Change
JANUARY	150,888	63,223	49,377	41,333	36,555	33,137	24,968	21,808	5,115	(3,160)
FEBRUARY	154,388	60,183	52,316	39,282	36,909	32,463	25,879	23,992	2,184	(1,887)
MARCH	157,257	54,578	45,928	35,755	32,439	32,141	21,171	22,446	(1,546)	1,275
APRIL	143,842	48,548	39,717	25,597	23,895	21,998	17,618	17,914	(4,532)	296
MAY	141,174	42,997	32,460	22,807	22,300	19,431	14,774	14,411	(3,503)	(363)
JUNE	136,670	41,722	29,524	22,030	22,025	16,722	14,653	14,280	(131)	(373)
JULY	121,336	44,597	30,845	22,341	22,326	15,775	15,098			
AUGUST	103,509	39,998	26,061	21,472	20,737	15,692	13,959			
SEPTEMBER	92,680	39,563	23,685	20,941	19,372	14,334	12,981			
OCTOBER	86,275	37,778	23,768	19,917	19,143	14,266	13,083			
NOVEMBER	82,451	38,517	25,315	21,199	19,547	14,347	15,499			
DECEMBER	91,814	42,484	30,982	26,249	24,599	17,345	16,693			

**Without earnings – Reference week claims*



Regular UI Claims by Industry

For the Reference Week of Each

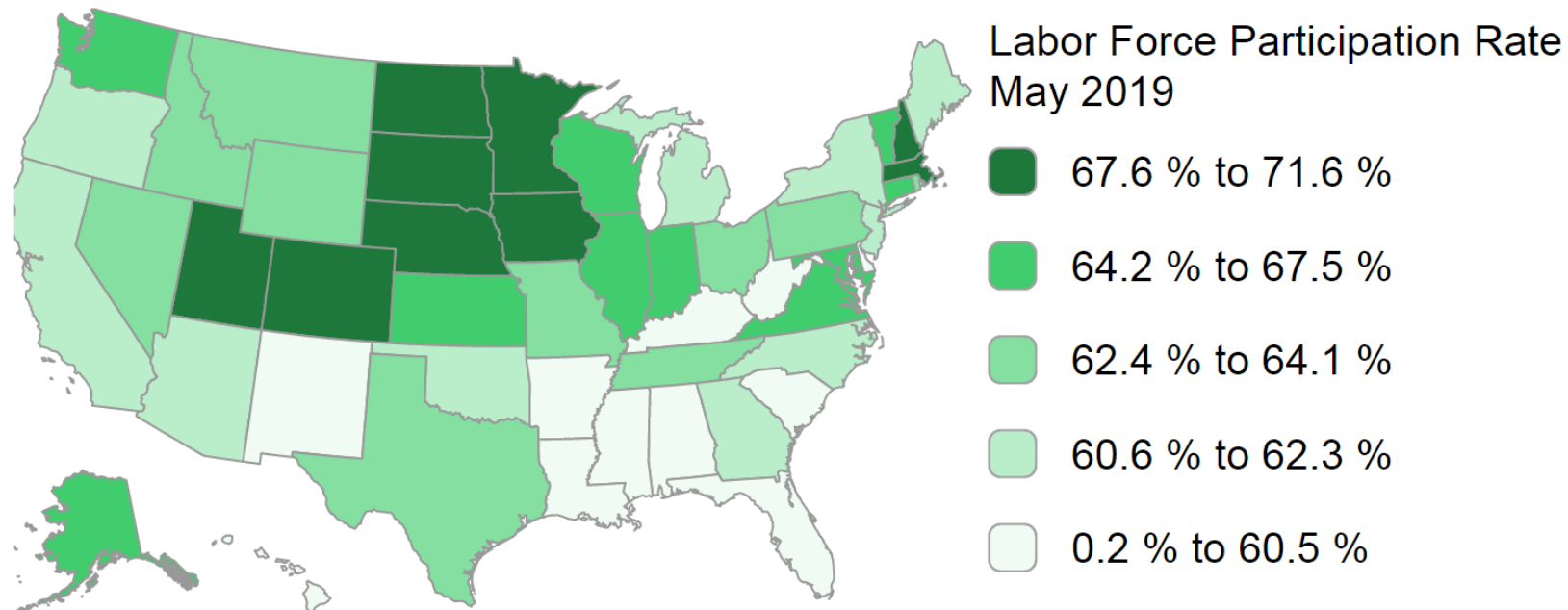


Source: ETA 203

Labor Force Participation Rate: Current Population Survey Definition

As a monthly indicator...

This measure is the number of people in the labor force as a percentage of the civilian noninstitutionalized population 16 years old and over (there is not upper age limit). In other words, it is the percentage of the total population aged 16+ that is either working or actively seeking work.



Source: US Bureau of Labor Statistics, *How the Government Measures Unemployment*, https://www.bls.gov/cps/cps_htgm.htm



Indiana: Not in Labor Force by Gender and Age

July 2018 – June 2019

Current Population Survey, Bureau of Labor Statistics (in 1000s)

	Total	Age			Sex	
		16 to 24 years	25 to 54 years	55 years and over	Men	Women
Indiana						
Total not in the labor force	1,832.4	294.6	429.3	1,108.5	731.2	1,101.2
Do not want a job now	1,721.0	256.8	390.9	1,073.3	676.9	1,044.1
Want a job	111.4	37.8	38.5	35.2	54.3	57.2
Did not search for work	74.2	24.1	22.6	27.6	35.4	38.8
Searched for work in	37.2	13.7	15.9	7.6	18.9	18.3
Not available to work	8.5	3.4	4.1	1.0	4.0	4.5
Available to work	28.7	10.3	11.8	6.6	14.9	13.8
Reason not						
Discouragemen	5.8	2.1	1.9	1.8	3.9	1.9
Reasons other	22.9	8.2	9.9	4.8	11.0	11.9
- Data not available						

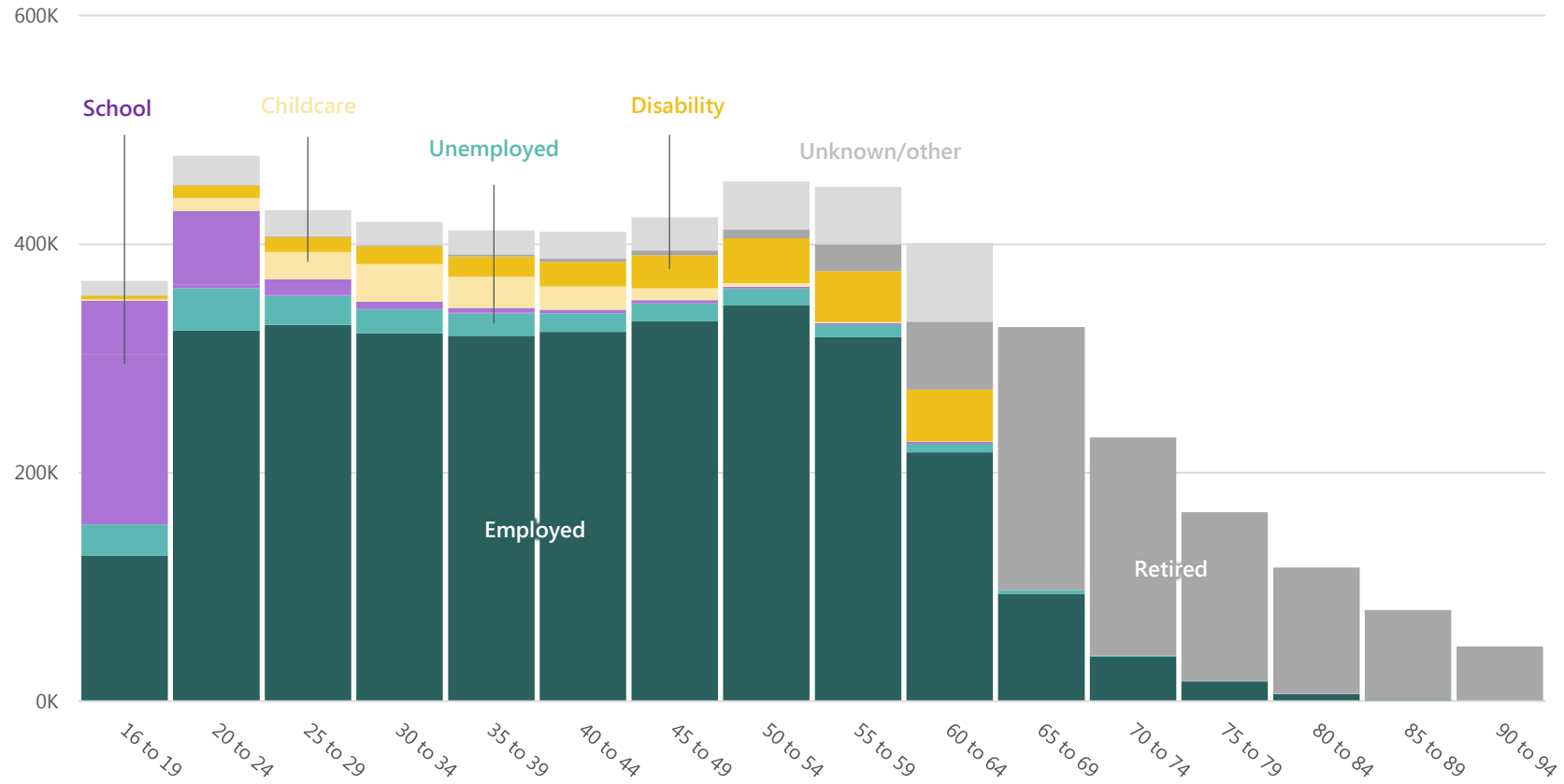
Table b. Civilians not in the labor force by sex and age, July 2018 - June 2019 (based on CPS)
(Numbers in thousands)



Hoosier Employment Status by Age

Employment Status by Age

Indiana residents



Source: American Community Survey IPUMS-USA



Indiana: Labor Force by Gender and Age

July 2018 – June 2019

Current Population Survey, Bureau of Labor Statistics (in 1000s)

	Civilian labor force participation	Unemployment rate
Male, All Races		
Age 16-19	45.8	14.5
Age 20-24	82.3	5.2
Age 25-34	89.6	3.6
Age 35-44	91.4	2.4
Age 45-54	88.5	2.4
Age 55-64	71.5	2.2
Age 65+	24.9	2.5
Female, All Races		
Age 16-19	41.5	12.3
Age 20-24	76.3	5.1
Age 25-34	75.2	3.4
Age 35-44	75.5	3.1
Age 45-54	77.4	3.4
Age 55-64	63.2	2.1
Age 65+	15.9	4.6

Source: Table a. Employment status of the civilian non-institutional population by sex, age, race, and Hispanic origin, July 2018 – June 2019 (based on CPS) (Numbers in thousands)



Indiana: Labor Force by Gender and Age

	Civilian labor force participation rate	Unemployment rate
Both Sexes		
All Races		
Age 16+	64.9	3.6
Age 16-19	43.7	13.4
Age 20+	66.5	3.1
White		
Age 16+	65.2	3.1
Age 16-19	46.7	11.1
Age 20+	66.4	2.7
Black		
Age 16+	63.6	8.1
Age 16-19	33.5	31.8
Age 20+	66.5	6.9
Hispanic		
Age 16+	70.4	3.4
Age 16-19	48.9	11.6
Age 20+	72.6	2.9
Male, All Races		
Age 16+	71.2	3.5
Age 20+	73.2	2.9
Female, All Races		
Age 16+	59.0	3.8
Age 20+	60.2	3.4
Male, White		
Age 16+	71.8	2.9
Age 20+	73.3	2.5
Female, White		
Age 16+	58.8	3.3
Age 20+	59.9	2.9

July 2018 – June 2019
 Current Population Survey, Bureau
 of Labor Statistics (in 1000s)

Source: Table a. Employment status of the civilian non-institutional population by sex, age, race, and Hispanic origin, July 2018 - June 2019 (based on CPS) (Numbers in thousands)



Indiana: Labor Force by Education

Table f. Employment status of the civilian non-institutional population 25 years and over by educational attainment, June 2018 - May 2019 (based on CPS)
(Numbers in thousands)

	Civilian non-institutional population	Civilian Labor Force		Employment		Unemployment	
		Total	Rate	Total	Rate	Total	Rate
Indiana							
Less than a High school diploma	372.1	143.5	38.6	130.4	35.1	13.1	9.1
High school graduates, no college ¹	1,580.3	954.2	60.4	923.8	58.5	30.4	3.2
Some college or associate degree	1,164.4	811.2	69.7	786.7	67.6	24.5	3.0
Bachelor's degree and higher ²	1,308.0	985.8	75.4	970.6	74.2	15.3	1.5

- Data not available

¹ Includes persons with a high school diploma or equivalent

² Includes person with bachelor's, master's, professional and doctoral degrees

